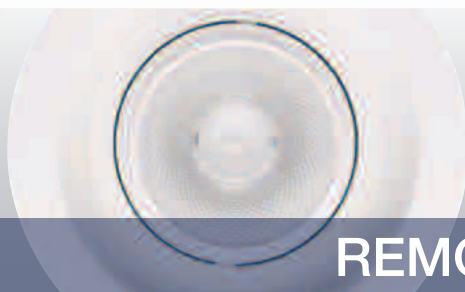




EDGE^{SERIES}

HIGH PERFORMANCE RECESSED DOWNLIGHT

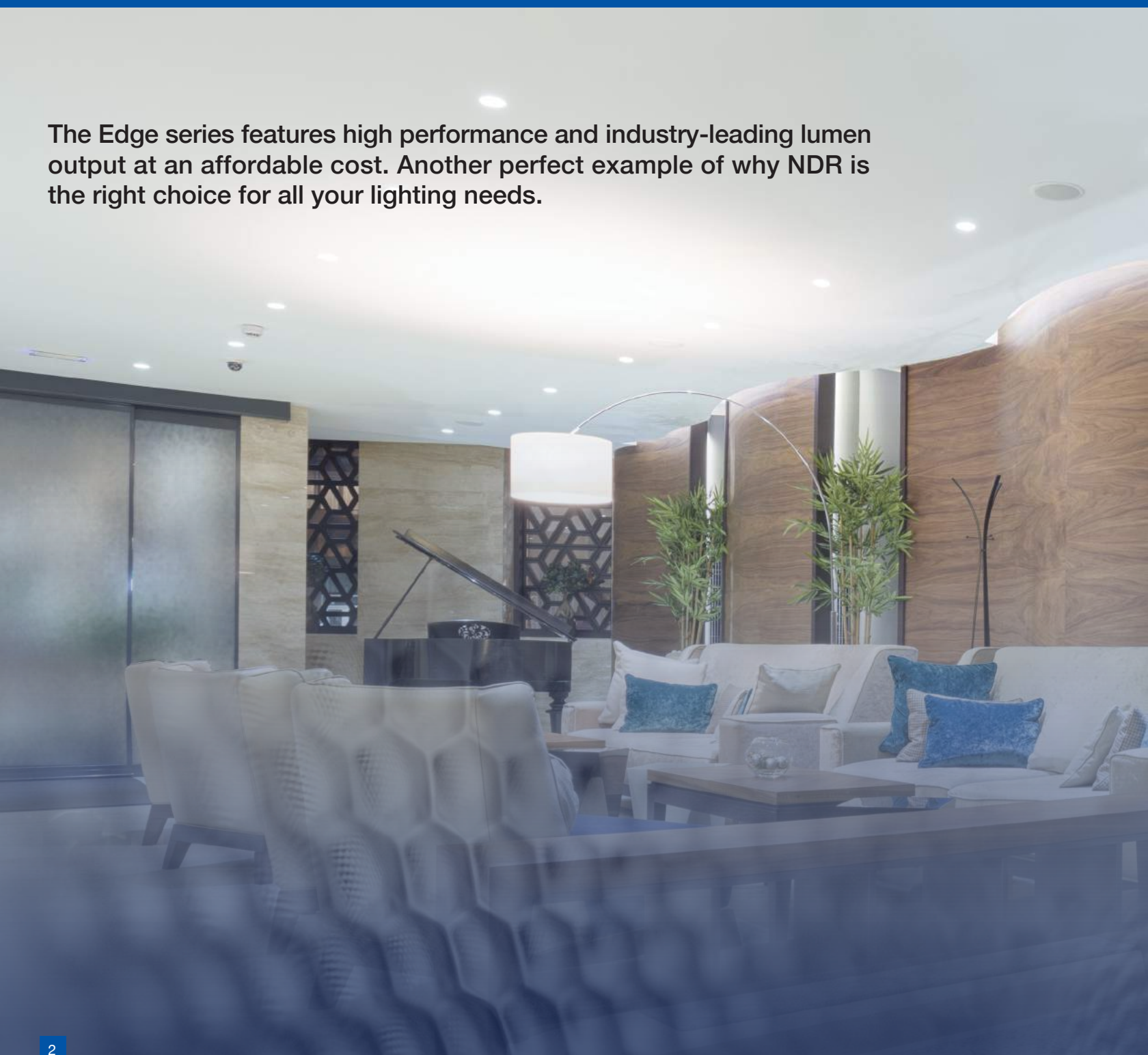



REMODEL | NEW CONSTRUCTION

EDGE

RECESSED DOWNLIGHT SERIES BY NDR

The Edge series features high performance and industry-leading lumen output at an affordable cost. Another perfect example of why NDR is the right choice for all your lighting needs.





HIGH PERFORMANCE

Both the 4- and 5-inch models deliver outstanding lumen performance with 1000+ lumens and 1800 lumens, respectively.

EASY INSTALLATION

Easy-to-open junction box with quick connects and superior clips allow for an easy install. Remodel or new construction ready.

HIGH-END COMPONENTS

Edge components include: Epistar COB LED, die-cast aluminum housing, superior clips, precision-made reflectors with >90% reflection efficiency and high optical accuracy, aluminum junction box with built-in driver and quick connects.

360° DIRECTIONAL

Once installed, you can simply swivel the inner gimbal 360 degrees to aim your beam spread in the desired direction.

GLARE CONTROL

The light source is regressed by more than 1.25 inches, eliminating any ceiling glare.

COMMERCIAL & RESIDENTIAL APPLICATIONS

Multiple applications are suitable for use with the Edge series in either residential or commercial projects.

EDGE

LED HIGH PERFORMANCE RECESSED DOWNLIGHT

Using state-of-the-art technology, the Edge was designed with performance in mind and allows for quick installation in both residential and commercial applications. Its superior brightness and low power usage make it the ideal lighting solution.



SIZE & MODELS

4"

EG400-12W-3K-38WH
EG400-12W-3K-38SV
EG400-12W-3K-38BK
EG400-12W-4K-38WH
EG400-12W-4K-38SV
EG400-12W-4K-38BK

5"

EG500-20W-3K-38WH
EG500-20W-3K-38SV
EG500-20W-3K-38BK
EG500-20W-4K-38WH
EG500-20W-4K-38SV
EG500-20W-4K-38BK

FINISH



SILVER



BLACK



WHITE

COLOR TEMPERATURE

3,000 K

4,000 K



PHOTOMETRICS

EG-400 4"

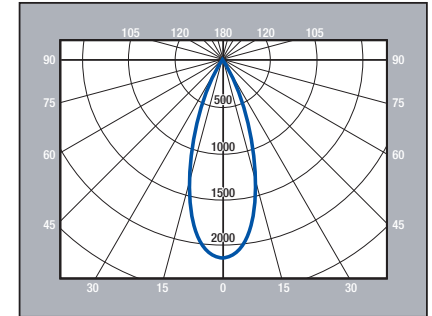
ZONAL LUMEN SUMMARY

ZONAL LUMEN SUMMARY		
ZONE	LUMENS	% OF LUMINAIRE
0-40	1039.8	93.41
0-60	1074.2	96.50
0-90	1111.7	99.87
90-180	1.4	1.2

FOOTCANDLE DIAGRAM

MOUNTING HEIGHT (FEET/METERS)	FOOTCANDLES AT NADIR	DIAMETER (FEET/METERS)
4.00' / 1.22m	133	2.43' / 0.74m
6.00' / 1.83m	59.2	3.65' / 1.11m
8.00' / 2.44m	33.3	4.86' / 1.48m
10.0' / 3.05m	21.3	6.08' / 1.85m
12.0' / 3.66m	14.8	7.29' / 2.22m
14.0' / 4.27m	10.9	8.51' / 2.59m
16.0' / 4.88m	8.33	9.72' / 2.96m

DISTRIBUTION CURVE



COEFFICIENTS OF UTILIZATION

CEILING CAVITY REFLECTANCE	80				70				50				30				10				0
WALL REFLECTANCE	70	50	30	10	70	50	30	10	50	30	10	50	30	10	50	30	10	50	30	10	0
ROOM CAVITY RATIO (RCR)	EFFECTIVE FLOOR CAVITY REFLECTANCE 20% ** VALUES ARE EXPRESSED AS LUMENS DELIVERED TO THE TASK SURFACE **																				
0	1135	1135	1135	1135	1108	1108	1108	1108	1059	1059	1059	1014	1014	1014	972	972	972	972	972	972	953
1	1088	1065	1043	1024	1065	1044	1025	1008	1006	991	977	971	959	948	938	929	921	921	921	921	904
2	1043	1002	968	939	1022	986	955	929	956	930	909	928	907	890	902	886	871	871	871	871	856
3	1000	946	905	872	982	933	896	865	909	878	852	887	860	838	866	844	826	826	826	826	812
4	959	897	851	816	943	886	844	812	866	831	802	848	818	793	831	805	784	784	784	784	771
5	920	852	804	769	906	843	799	765	827	789	759	812	779	752	798	769	746	746	746	746	734
6	884	811	763	728	871	804	758	725	791	750	720	778	743	716	766	735	711	711	711	711	699
7	850	774	725	691	838	768	722	689	757	716	686	746	710	682	736	704	679	679	679	679	667
8	818	740	692	659	807	735	689	657	726	684	655	717	679	652	708	675	649	649	649	649	638
9	788	709	661	629	778	705	659	628	697	655	626	689	651	624	682	647	622	622	622	622	611
10	759	681	634	602	751	677	632	602	670	628	600	663	625	598	657	622	597	597	597	597	586

The data was compiled using the standard 38 degree reflector

AVERAGE LUMINANCE (cd/m²)

VERTICAL ANGLE (DEGREES)	HORIZONTAL ANGLE (DEGREES)		
	0	45	90
0	39840	39840	39840
45	9482	9482	9482
55	2766	2766	2766
65	2090	2090	2090
75	2026	2026	2026
85	741	741	741

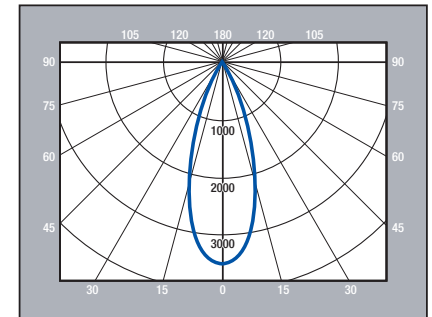
ZONAL LUMEN SUMMARY

ZONAL LUMEN SUMMARY		
ZONE	LUMENS	% OF LUMINAIRE
0-40	1683.6	93.02
0-60	1743.5	96.33
0-90	1807.3	99.86
90-180	2.5	1.2

FOOTCANDLE DIAGRAM

MOUNTING HEIGHT (FEET/METERS)	FOOTCANDLES AT NADIR	DIAMETER (FEET/METERS)
4.00' / 1.22m	222	2.33' / 0.71m
6.00' / 1.83m	98.7	3.49' / 1.06m
8.00' / 2.44m	55.5	4.65' / 1.42m
10.0' / 3.05m	35.5	5.81' / 1.77m
12.0' / 3.66m	24.7	6.98' / 2.13m
14.0' / 4.27m	18.1	8.14' / 2.48m
16.0' / 4.88m	13.9	9.30' / 2.83m

DISTRIBUTION CURVE



COEFFICIENTS OF UTILIZATION

CEILING CAVITY REFLECTANCE	80				70				50				30				10				0
WALL REFLECTANCE	70	50	30	10	70	50	30	10	50	30	10	50	30	10	50	30	10	50	30	10	0
ROOM CAVITY RATIO (RCR)	EFFECTIVE FLOOR CAVITY REFLECTANCE 20% ** VALUES ARE EXPRESSED AS LUMENS DELIVERED TO THE TASK SURFACE **																				
0	1999	1999	1999	1999	1953	1953	1953	1953	1866	1866	1866	1787	1787	1787	1714	1714	1714	1714	1714	1714	1679
1	1911	1867	1827	1791	1870	1831	1795	1763	1763	1735	1709	1701	1678	1658	1643	1626	1610	1610	1610	1610	1580
2	1826	1749	1686	1632	1789	1721	1663	1614	1667	1620	1579	1617	1579	1545	1571	1541	1513	1513	1513	1513	1486
3	1745	1645	1568	1507	1712	1622	1552	1495	1579	1520	1471	1539	1490	1448	1502	1461	1426	1426	1426	1426	1401
4	1669	1553	1468	1404	1640	1534	1456	1395	1499	1432	1379	1466	1409	1363	1436	1388	1348	1348	1348	1348	1324
5	1598	1470	1382	1316	1572	1455	1372	1310	1426	1354	1299	1399	1337	1288	1374	1320	1277	1277	1277	1277	1254
6	1531	1396	1305	1240	1507	1383	1298	1236	1359	1284	1228	1336	1270	1220	1315	1257	1212	1212	1212	1212	1190
7	1468	1328	1237	1174	1447	1317	1231	1171	1297	1220	1165	1278	1209	1159	1260	1199	1153	1153	1153	1153	1131
8	1409	1266	1176	1114	1390	1257	1171	1112	1239	1162	1108	1223	1154	1103	1208	1145	1099	1099	1099	1099	1078
9	1354	1209	1121	1061	1337	1202	1117	1059	1187	1110	1056	1172	1103	1052	1159	1096	1049	1049	1049	1049	1029
10	1303	1157	1070	1013	1287	1151	1067	1011	1138	1061	1009	1125	1055	1006	1114	1050	1003	1003	1003	1003	984

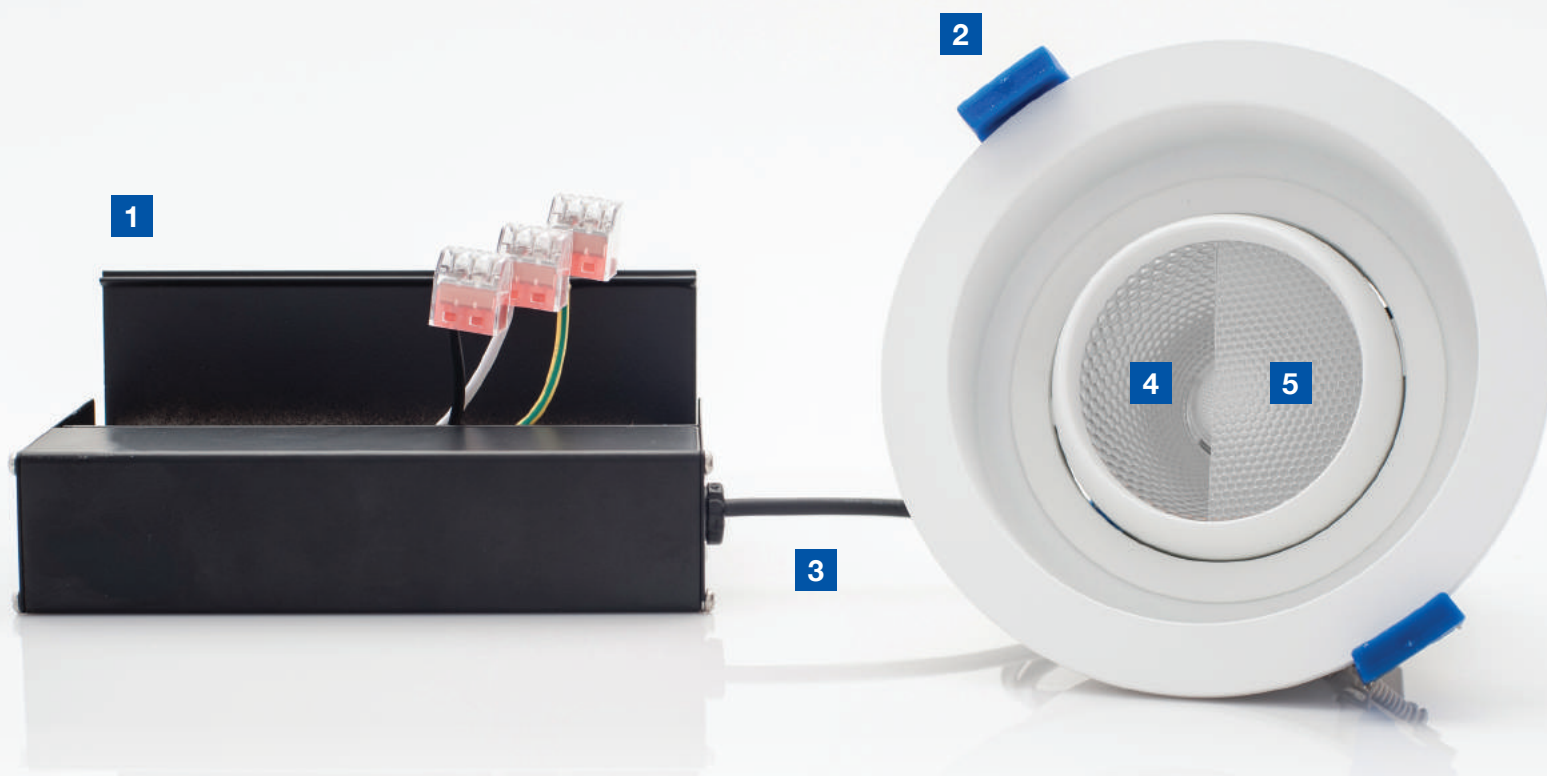
The data was compiled using the standard 38 degree reflector

AVERAGE LUMINANCE (cd/m²)

VERTICAL ANGLE (DEGREES)	HORIZONTAL ANGLE (DEGREES)		
	0	45	90
0	438200	438200	438200
45	11570	11570	11570
55	4399	4399	4399
65	4841	4841	4841
75	5771	5771	5771
85	3019	3019	3019

COMPONENTS

VERSATILE PARTS FOR EASY INSTALLATION



1 JUNCTION BOX

- “Quick Connect” wire connectors for a quick wire connection
- Standard 120V dimmable driver; optional 277V or 347V drivers available as special order (0-10V dim)

2 SPRING CLIPS AND FLANGES

- Heavy duty mounting clips are designed for sturdy installation and prevent springs from falling off during installation
- Large flange feature allows for compensation if hole cut-outs are done incorrectly

3 WIRE CONNECTORS

- Locking nut feature ensures light unit and junction box remain connected

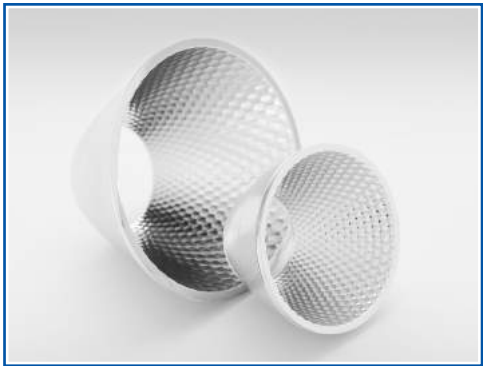


ACCESSORIES

MIX AND MATCH FOR CUSTOM APPLICATIONS

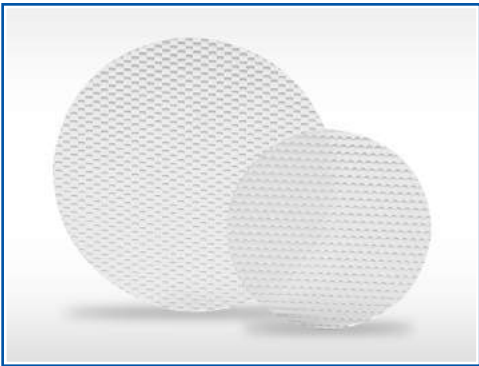
4 38° REFLECTOR

- Standard 38° and optional 24° reflectors; see special order guide below for order codes



5 SOLITE LENS (OPTIONAL)

- See special order guide below for order codes



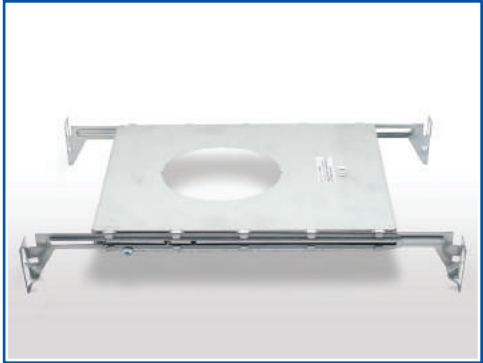
SPECIAL ORDER GUIDE

EGS		-			-		-		-	
-----	--	---	--	--	---	--	---	--	---	--

SERIES	NOMINAL SIZE	REFLECTOR LENS		VOLTAGE	COLOR TEMPERATURE	FINISH COLOR
EGS	4 (4")	24 (24°)	blank (no lens)	blank (120V)	3K (3000K)	WH (white)
	5 (5")	38 (38°)	L (Solite lens)	277 (277V)	4K (4000K)	BLK (black)
				347 (347V)		SV (silver)

MOUNTING PLATES & HANGER BARS

- Recommended for new construction or suspended ceiling applications



20' EXTENSION CABLE

- Available for use in hard-to-reach areas



IC BOX

- IC conversion box is required for insulated ceiling applications





RAZOR^{SERIES}

ULTRA THIN RECESSED DOWNLIGHT



RAZOR



RAZOR-R



RAZOR-G



RAZOR-S

RAZOR

RECESSED DOWNLIGHT SERIES BY NDR

The Razor series' ultra-slim design is perfect for any small space and allows for flexible installation, particularly in confined areas or when facing constraints such as beams, ceiling joists or air ducts.

Razor models come in a wide variety of shapes, finishes and color temperatures. They combine high lumen output with low power consumption and offer an elegant, contemporary look to residential and commercial indoor lighting.

RATINGS AND CERTIFICATIONS

Airtight rated ASTM E283-04
IC rated
WET location rated except
Razor-G model which is DAMP rated
Fire rated FT4 wires (UL 2464)
CSA certified for USA and Canada

3 FINISHES

White, black and satin chrome

3 COLOR TEMPERATURES

2,700 K, 3,000 K and 4,000 K

EASY INSTALLATION

Each unit includes a junction box with driver, pressure-fit spring clips and Quick Connect wire connectors for fast and easy installation

RAZOR

ULTRA THIN RECESSED DOWNLIGHT **LED**

The first model in the collection, this traditional style provides numerous design functions. Whether a home or commercial application, its superior brightness and low power usage offer the ideal lighting solution.

SIZE & MODELS

3"

RZR-300-6W-3K-WH
RZR-300-6W-3K-BLK
RZR-300-6W-3K-SC
RZR-300-6W-4K-WH
RZR-300-6W-4K-BLK
RZR-300-6W-4K-SC

4"

RZR-400-9W-27K-WH
RZR-400-9W-3K-WH
RZR-400-9W-3K-BLK
RZR-400-9W-3K-SC
RZR-400-9W-4K-WH
RZR-400-9W-4K-BLK
RZR-400-9W-4K-SC

6"

RZR-600-12W-27K-WH
RZR-600-12W-3K-WH
RZR-600-12W-3K-BLK
RZR-600-12W-3K-SC
RZR-600-12W-4K-WH
RZR-600-12W-4K-BLK
RZR-600-12W-4K-SC

COLOR TEMPERATURE

2,700 K

3,000 K

4,000 K

FINISH



WHITE



BLACK



SATIN CHROME



RAZOR-R

LED LOW PROFILE REGRESSED RECESSED DOWNLIGHT

The Razor-R series takes illumination to the next level, featuring a design and look that create a wash of light to flow throughout, with minimal hot spots on the ceiling.

SIZE & MODELS

4" | 6"

RZR-410-9W-3K-WH	RZR-610-12W-3K-WH
RZR-410-9W-3K-BLK	RZR-610-12W-3K-BLK
RZR-410-9W-3K-SC	RZR-610-12W-3K-SC
RZR-410-9W-4K-WH	RZR-610-12W-4K-WH
RZR-410-9W-4K-BLK	RZR-610-12W-4K-BLK
RZR-410-9W-4K-SC	RZR-610-12W-4K-SC

FINISH | COLOR TEMPERATURE

		
SATIN CHROME	BLACK	WHITE

3,000 K | 4,000 K



RAZOR-G

LOW PROFILE GIMBAL RECESSED DOWNLIGHT **LED**

The Razor-G series improves on the original concept by being able to direct the light output where needed. This unit is perfect for highlighting specific needs, such as a sloped ceiling application.

SIZE & MODELS

4"

RZR-420-9W-3K-WH
RZR-420-9W-3K-BLK
RZR-420-9W-3K-SC
RZR-420-9W-4K-WH
RZR-420-9W-4K-BLK
RZR-420-9W-4K-SC

COLOR TEMPERATURE

3,000 K | 4,000 K

FINISH



WHITE



BLACK



SATIN CHROME



RAZOR-S

LED ULTRA THIN RECESSED SQUARE DOWNLIGHT

The contemporary looking Razor-S series has all the benefits of the original Razor. The square design enables unlimited design applications, using cutting-edge installation techniques. All Razor-S units offer a round back feature, making hole cut-outs much easier and quicker than the standard square back versions.

SIZE & MODELS

4"

RZR-430-9W-3K-WH
RZR-430-9W-3K-BLK
RZR-430-9W-3K-SC
RZR-430-9W-4K-WH
RZR-430-9W-4K-BLK
RZR-430-9W-4K-SC

6"

RZR-630-12W-3K-WH
RZR-630-12W-3K-BLK
RZR-630-12W-3K-SC
RZR-630-12W-4K-WH
RZR-630-12W-4K-BLK
RZR-630-12W-4K-SC

FINISH

 SATIN CHROME

 BLACK

 WHITE

COLOR TEMPERATURE

3,000 K

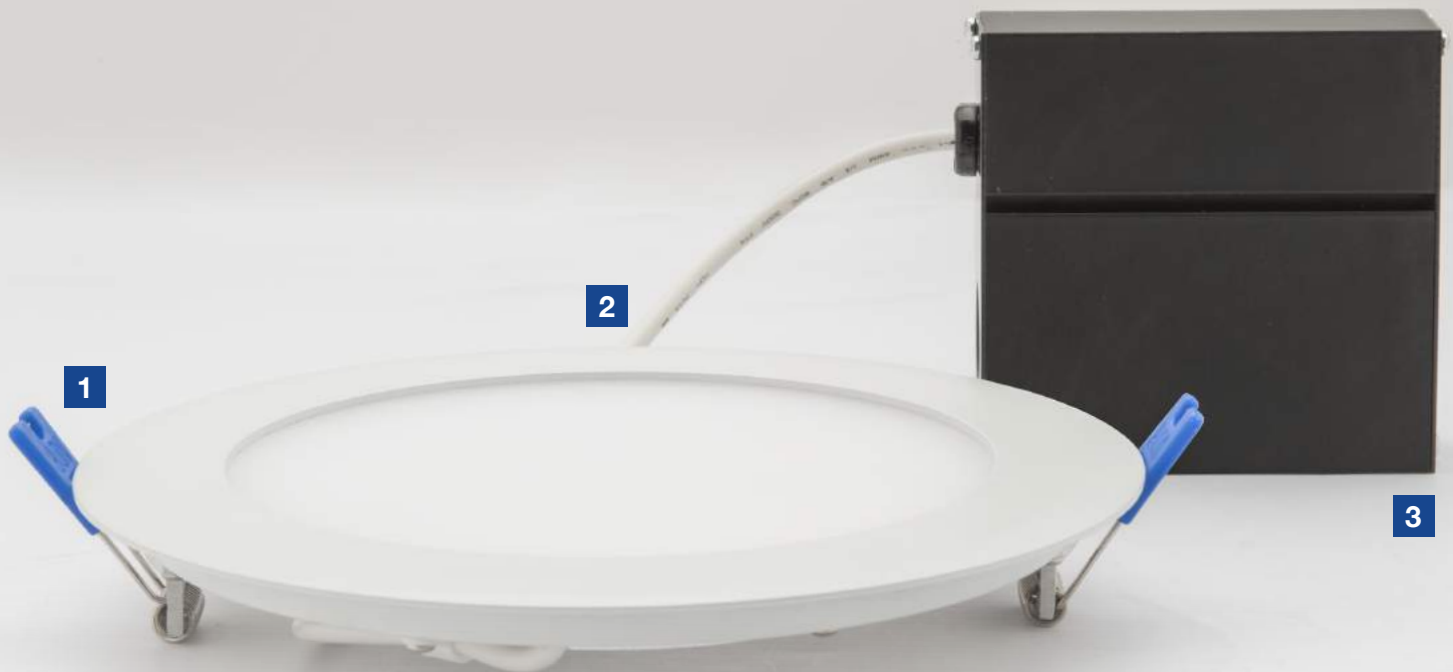
4,000 K

ROUND BACK



COMPONENTS

VERSATILE PARTS FOR EASY INSTALLATION



1 SPRING CLIPS AND FLANGES

- Heavy duty mounting clips are designed for sturdy installation and prevent springs from falling off during installation
- Large flange feature allows for compensation if hole cut-outs are done incorrectly



2 WIRE CONNECTORS

- Locking nut feature ensures light unit and junction box remain connected



3 JUNCTION BOX

- “Quick Connect” wire connectors for a quick wire connection





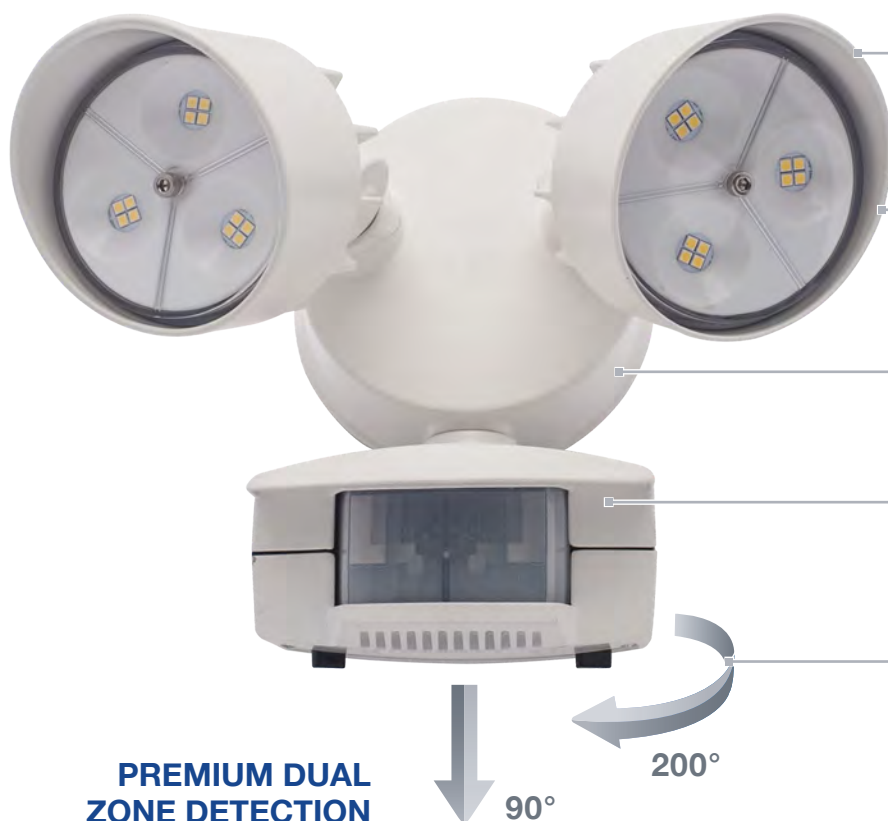
OUTDOOR SECURITY FLEET

ADVANCED OUTDOOR ILLUMINATION SOLUTIONS



EXCALIBUR

LED TWIN-HEAD FLOOD | OS100LED-2HO



**PREMIUM DUAL
ZONE DETECTION**

TOOL-FREE

Adjustable heads allow for easy aiming up and down or side to side

RUGGED CAST ALUMINUM HOUSING

Corrosion-resistant die-cast aluminum construction

DUAL MOUNT SYSTEM

Can be mounted on walls or soffits

MOTION SENSOR CONTROLS

Easy-to-access time and sensitivity motion controls

PREMIUM MOTION SENSOR

200° forward coverage
Up to 70ft and 90° down coverage

ALSO AVAILABLE IN DARK BRONZE



TECHNICAL FEATURES

50,000 hour LED life • Wet location certified
UL listed to US and Canadian standard certified
Operating temperature: -40°C to 40°C / -40°F to 104°F
Available in White and Dark Bronze colors



LIGHT OUTPUT	COLOR TEMPERATURE	VOLTAGE	WATTAGE	CRI	WIDTH	HEIGHT	DEPTH	WARRANTY
2300LM	4000K	120V	27W	≥ 80	7.7"	7.3"	7.8"	5 YEARS

VOYAGER

OS600LED-2HR

LED TWIN-HEAD FLOOD

TOOL-FREE

Adjustable heads allow for easy aiming up and down or side to side

RUGGED CAST ALUMINUM HOUSING

Corrosion-resistant die-cast aluminum construction

DUAL MOUNT SYSTEM

Can be mounted on walls or soffits

MOTION SENSOR CONTROLS

Easy-to-access time and sensitivity motion controls

PREMIUM MOTION SENSOR

200° forward coverage
Up to 70ft and 90° down coverage

ALSO AVAILABLE IN DARK BRONZE



TECHNICAL FEATURES

50,000 hour LED life • Wet location certified
UL listed to US and Canadian standard certified
Operating temperature: -40°C to 40°C / -40°F to 104°F
Available in White and Dark Bronze colors



LIGHT OUTPUT	COLOR TEMPERATURE	VOLTAGE	WATTAGE	CRI	WIDTH	HEIGHT	DEPTH	WARRANTY
2000LM	4000K	120V	27W	≥ 75	10.5"	8"	6.4"	5 YEARS

ENTERPRISE

LED ENTRY LIGHT | OS400LED-ELD



DUSK TO DAWN

Integrated photocell for dusk-to-dawn operation

DIE-CAST ALUMINUM HOUSING

Corrosion-resistant die-cast aluminum construction

PROTECTIVE DIFFUSER

Impact-resistant polycarbonate diffuser maximizing light output distribution and light source protection

ALSO AVAILABLE IN DARK BRONZE



TECHNICAL FEATURES

50,000 hour LED life • Wet location certified
UL listed to US and Canadian standard certified
Operating temperature: -40°C to 40°C / -40°F to 104°F
Available in White and Dark Bronze colors



WET
LOCATION

LIGHT OUTPUT	COLOR TEMPERATURE	VOLTAGE	WATTAGE	CRI	WIDTH	HEIGHT	DEPTH	WARRANTY
2000LM	4000K	120V	35W	≥80	6.90"	4.50"	8.00"	5 YEARS



DEFIANT

OS500LED-EL | LED ENTRY LIGHT

DUSK TO DAWN



Integrated photocell for dusk-to-dawn operation

IMPACT-RESISTANT HOUSING

Resistant polycarbonate housing with UV protection

PROTECTIVE DIFFUSER

Impact-resistant polycarbonate diffuser maximizing light output distribution and light source protection



ALSO AVAILABLE IN DARK BRONZE



TECHNICAL FEATURES

50,000 hour LED life • Wet location certified
UL listed to US and Canadian standard certified
Operating temperature: -40°C to 40°C / -40°F to 104°F
Available in White and Dark Bronze colors



LIGHT OUTPUT	COLOR TEMPERATURE	VOLTAGE	WATTAGE	CRI	WIDTH	HEIGHT	DEPTH	WARRANTY
1200LM	4000K	120V	18W	≥80	5.0"	8.3"	2.0"	5 YEARS

EXETER

LED WALL PACK | OS200LED-WP



DUSK TO DAWN

Integrated photocell for dusk-to-dawn operation

IMPACT-RESISTANT HOUSING

Resistant polycarbonate housing with UV protection

PROTECTIVE DIFFUSER

Impact-resistant polycarbonate diffuser maximizing light output and light source protection

DESIGNED FOR LED

Traditional design that incorporates the latest LED technologies



TECHNICAL FEATURES

50,000 hour LED life • Wet location certified
UL listed to US and Canadian standard certified
Operating temperature: -40°C to 40°C / -40°F to 104°F
Available in Dark Bronze colour only



LIGHT OUTPUT	COLOR TEMPERATURE	VOLTAGE	WATTAGE	CRI	WIDTH	HEIGHT	DEPTH	WARRANTY
1600LM	5000K	120V	27W	≥ 75	7.7"	7.3"	7.8"	5 YEARS



LEXINGTON

OS300LED-YL | YARD LIGHT FLOOD

DUSK TO DAWN



Integrated photocell for dusk-to-dawn operation

DIE-CAST ALUMINUM HOUSING

Corrosion-resistant die-cast aluminum construction

PROTECTIVE DIFFUSER

Impact-resistant polycarbonate diffuser maximizing light output distribution and light source protection



ALSO AVAILABLE: MOUNTING ARM (OSACC-001-DB)



TECHNICAL FEATURES

50,000 hour LED life • Wet location certified
UL listed to US and Canadian standard certified
Operating temperature: -40°C to 40°C / -40°F to 104°F
Available in Dark Bronze color only



LIGHT OUTPUT	COLOR TEMPERATURE	VOLTAGE	WATTAGE	CRI	WIDTH	HEIGHT	DEPTH	WARRANTY
2500LM	5000K	120V	28W	≥ 70	6.0"	6.3"	8.7"	5 YEARS



www.ndrelectric.com

t. 514.695.8228 t.f. 1.855.739.8228 f. 514.695.9009
166 Brunswick Boulevard, Montreal, Quebec H9R 5P9