

SPRING FLYER 2018

Be Smart. Be Safe. Be Sure.



STRONGARM



32 PC SAE/Metric Raised Panel Combination Wrench Set



- 1/4 - 1-1/4"
- 7 - 24 mm
- CrV steel
- Blow mould case

700201 CWS-32SM List \$339.90



SALE

\$169.95

6" Digital Calipers



NEW METAL BODY
CONSTRUCTION!
NEW LOWER PRICE!

- Resolution 0.0005" / 0.01 mm
- Extra large LCD screen
- Stainless steel

310131 JEDC-6 List \$112.00

SALE

\$63.95

17 US Gallon (64 Litre) Low Profile Polypropylene Oil Drain



- Ideal for draining oil where a pit or hoist is not available
- Convenient rotary hand pump for fast evacuation to large oil collection tanks

350514 JOIDRLP List \$526.55

SALE

\$329.95

1/2" Composite Impact Wrench - Super Heavy Duty



Limited Qty.



- Specially treated anvil for long service life
- Internal one piece construction reduces power loss
- Produces 780 ft/lb of nut wrenching torque in reverse

400242 AW500C List \$298.85

SALE

\$199.95



TOOLS & EQUIPMENT

Sale Pricing in Effect April 1 – Aug. 31, 2018

Distributed by

42 PC 1/4" DR SAE/Metric Socket Wrench Set - 6 Point

- 3/16 - 1/2"
- 4 - 12 mm
- Standard and Deep Length
- CrV Steel

600125 SW1442C-6 List \$160.30

SALE

\$92.95

21 PC 3/8" DR SAE Socket Wrench Set - 6 Point

- 3/8 - 3/4" Standard Length
- 3/8 - 13/16" Deep Length
- CrV Steel

600229 SW3821-6 List \$181.00

SALE

\$104.95

30 PC 3/8" DR Metric Socket Wrench Set - 6 Point

- 8 - 19 mm Standard and Deep Length
- CrV Steel

600234 SW3830M-6 List \$206.85

SALE

\$119.95

42 PC 1/4" DR SAE/Metric Socket Wrench Set - 12 Point

- 3/16 - 1/2"
- 4 - 12 mm
- Standard and Deep Length
- CrV Steel

600126 SW1442C-12 List \$163.75

SALE

\$94.95

20 PC 1/2" DR SAE Socket Wrench Set - 6 Point

- 7/16 - 1-1/4"
- Standard Length
- CrV Steel

600323 SW1220-6 List \$293.10

SALE

\$169.95

55 PC 1/2" DR SAE/Metric Socket Wrench Set - 6 Point

- 3/8 - 1-1/4", 10 - 32 mm Standard Length
- 7/16 - 7/8", 10 - 21 mm Deep Length
- CrV Steel

600341 SW1255C-6 List \$500.05

SALE

\$289.95

45 PC 3/8" DR SAE/Metric Socket Wrench Set - 12 Point

- 3/8 - 3/4", 8 - 19 mm Standard Length
- 3/8 - 13/16", 8 - 19 mm Deep Length
- CrV Steel

600242 SW3845C-12 List \$327.60

SALE

\$189.95

21 PC 3/4" DR SAE Socket Wrench Set - 12 Point

- 3/4" - 2"
- CrV Steel

600406 SW7521-HD List \$633.95

SALE

\$349.95

17 PC 3/4" DR Metric Socket Set - 12 Point

- 19 - 50 mm
- CrV Steel

601406 SS3417M List \$416.60

SALE

\$229.95

11 PC 1/4" & 3/8" DR Non-Tamperproof TORX® Bit Socket Set

- 3/8" DR 2" (Overall Length) TORX® bit
- Standard Length external TORX®
- 2" (Overall Length) TORX® bit
- 1/4" DR 1-1/2" (Overall Length) TORX® bit

601806 SS1438-11T List \$68.90

SALE

\$39.95

10 PC Hex Bit Socket Sets

- 601802**
- 3/8" DR 1/8 - 3/8"
- 1/2" DR 1/2 - 5/8"
- Includes socket rail
- S2 steel

- 601803**
- 3/8" DR 3 - 10 mm
- 1/2" DR 12 - 16 mm
- Includes socket rail
- S2 steel

PROD. NO.	MOD. NO.	List	Sale
601802	HSW3812-10	\$74.05	\$42.95
601803	HSW3812-10M	\$74.05	\$42.95

3/4" DR Oval Head Ratchet Wrench - Heavy Duty

- 24 teeth
- Quick release

673922 RHQ-34 List \$232.75

SALE

\$134.95

Digital Torque Wrenches



- Digital readout signals torque audibly and visually
- 12 multi coloured lights with beeper signal torque even when display cannot be read

PROD. NO.	MOD. NO.	Drive	Torque Range	List	Sale
718941	JDTW-14250	1/4"	13.3 - 265.5 in/lb (1.5 - 30 Nm)	\$603.55	\$299.95
718943	JDTW-38100	3/8"	5 - 99.5 ft/lb (6.8 - 135 Nm)	\$645.90	\$329.95
718946	JDTW-12250	1/2"	12.5 - 250.5 ft/lb (17 - 340 Nm)	\$707.00	\$379.95

SUPER SPECIAL

1/4" DR 50 in/lb Torque Screwdriver



- 10 - 50 in/lb
- 6" length

718991 JTSD-1450K List \$244.90

SALE \$142.00

Torque Wrenches - JTW Series



- Reversible ratchet
- Ft/lb and Nm scales

PROD. NO.	MOD. NO.	Drive	List	Sale
718902	JTW-1425	1/4"	\$189.60	\$109.95
718908	JTW-3880	3/8"	\$206.85	\$119.95
718911	JTW-12150	1/2"	\$224.10	\$129.95
718912	JTW-12250	1/2"	\$309.55	\$179.50
718918	JTW-34600	3/4"	\$1,238.30	\$718.00
718922	JTW-10700	1"	\$1,716.00	\$995.00

Torque Wrenches - JPTW Series - Heavy Duty



SUPER SPECIAL

- Works on left and right hand threads
- Quick release ratchet

PROD. NO.	MOD. NO.	Drive	List	Sale
718933	JPTW-38100	3/8"	\$256.90	\$129.95
718936	JPTW-12250	1/2"	\$365.55	\$169.95

3/4" DR 1,850 ft/lb Torque Multiplier Kit



- Kit includes straight and 90° reaction bars with reaction base

719075 JTM-71850 List \$1,379.60

SALE \$799.95

32 PC SAE/Metric Raised Panel Combination Wrench Set



- 1/4 - 1-1/4"
- 7 - 24 mm
- CrV steel
- Blow mould case

700201 CWS-32SM List \$339.90

SUPER SPECIAL

SALE \$169.95

16 PC SAE Raised Panel Combination Wrench Set



- 1/4 - 1-1/4"
- CrV steel
- Terylene pouch

700121 CWS-16S List \$224.10

SALE \$129.95

16 PC Metric Raised Panel Combination Wrench Set



- 7 - 24 mm
- CrV steel
- Terylene pouch

700173 CWS-16M List \$172.40

SALE \$99.95

13 PC Long SAE Ratcheting Combination Wrench Set



- 1/4 - 1"
- CrV steel
- Plastic rack

700312 RCWS-13S List \$421.40

SALE \$244.35

14 PC Long SAE Fully Polished Combination Wrench Set



- 3/8 - 1-1/4"
- CrV steel
- Terylene pouch

700134 LCWS-14S List \$361.05

SALE \$209.35

Professional Adjustable Wrenches - SHD



- Ergonomic design
- All sizes CrV steel!

PROD. NO.	MOD. NO.	Length	Opening	List	Sale
711132	AWP-6	6" (160 mm)	15/16"	\$30.60	\$17.75
711133	AWP-8	8" (210 mm)	1-1/8"	\$39.25	\$22.75
711134	AWP-10	10" (250 mm)	1-5/16"	\$48.20	\$27.95
711135	AWP-12	12" (300 mm)	1-1/2"	\$65.10	\$37.75
711136	AWP-15	15" (380 mm)	2"	\$114.60	\$66.45
711137	AWP-18	18" (450 mm)	2-5/16"	\$187.90	\$108.95
711139	AWP-24	24" (600 mm)	2-3/4"	\$355.90	\$206.35

12 PC 3/8" DR SAE Impact Socket Set - 6 Point

CrMo



- 5/16 - 1"
- CrMo steel

610207 PS1238 List \$112.00

SALE

\$64.95

13 PC 3/8" DR Metric Impact Socket Set - 6 Point

CrMo



- 7 - 19 mm
- CrMo steel

610217 PS1438M List \$89.60

SALE

\$51.95

13 PC 1/2" DR Deep SAE Impact Socket Set - 6 Point

CrMo



- 7/16 - 1-1/4"
- CrMo steel

610323 PS1312D List \$215.50

SALE

\$124.95

19 PC 1/2" DR SAE Impact Socket Set - 6 Point

CrMo



- 3/8 - 1-1/2"
- CrMo steel

610328 PS1912 List \$241.35

SALE

\$139.95

19 PC 1/2" DR Deep SAE Impact Socket Set - 6 Point

CrMo



- 3/8 - 1-1/2"
- CrMo steel

610329 PS1912D List \$370.70

SALE

\$214.95

27 PC 1/2" DR Deep SAE/Metric Impact Socket Set - 6 Point

CrMo



- 7/16 - 1-1/4"
- 10 - 24 mm
- 5" extension and universal joint
- CrMo steel

610327 PS2712DC List \$517.30

SALE

\$299.95

22 PC 1/2" DR Deep Metric Impact Socket Set - 6 Point

CrMo



- 10 - 32 mm
- CrMo steel

610339 PS2212DM List \$413.85

SALE

\$239.95

16 PC 1/2" DR SAE/Metric Hex Bit Impact Socket Set

CrMo



- 1/4 - 3/4"
- 6 - 19 mm
- CrMo steel

610340 PHB-1216C List \$291.40

SALE

\$168.95

5 PC 1/2" DR Mag Wheel Impact Socket Set



- 13/16 - 7/8", 17 - 21 mm
- Colour coded for identification

610341 MWPS-512 List \$144.80

SALE

\$83.95

21 PC 3/4" DR SAE Impact Socket Set - 6 Point

CrMo



- 3/4 - 2"
- CrMo steel

610409 PS2134 List \$723.85

SALE

\$399.95

21 PC 3/4" DR Deep SAE Impact Socket Set - 6 Point

CrMo



- 3/4 - 2"
- CrMo steel

610410 PS2134D List \$1,158.20

SALE

\$671.55

18 PC 1" DR SAE Impact Socket Set - 6 Point

CrMo



- 3/4 - 2"
- CrMo steel

610509 PS1801 List \$722.55

SALE

\$418.95

JET Industrial Program

**Jumbo 1-1/2" & 2-1/2" DR
Impact Sockets**

Retainer Rings & Pins

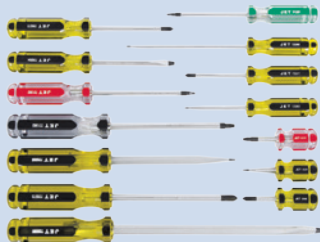
**Offset & Flat
Striking Wrenches**

**Box End
Structural Wrenches**



JET is pleased to announce a major expansion into **Large Drive Impact Sockets** and new sizes and styles of **Striking and Structural Wrenches!** Built of the finest quality materials, using the latest in heat treatment techniques, and backed by JET's satisfaction guarantee, these tools are made for the toughest applications found in Canadian industries. And unlike many competitors, we stock these products right here at home! These **191 New Items join 88 others** introduced last fall to give our customers more reason than ever to look to JET for their heaviest duty applications! See your local distributor or visit surewerx.com for more details.

14 PC Jumbo Handle Screwdriver Set



- CrV shafts
- Blow mould tray

720507 JHSS-14 List \$149.95

SALE

\$86.95

19 PC Ratcheting Screwdriver Set



- 8 double-ended screwdriver bits and 3 nut drivers

720590 JRSD-19 List \$57.80

SALE

\$33.50

14 PC Cushion Grip Screwdriver Set

- Patented SVCM tool steel is up to 30% stronger than CrV screwdrivers
- Integrated cushion grips provide all day comfort and increase torque
- Slot stubby round shank 1/4" x 1-1/2"
- Slot square shank 1/4" x 4", 5/16" x 6", 3/8" x 8"
- Cabinet tip 3/16" x 3", 3/16" x 6"
- Phillips #1 x 3", #2 x 1-1/2", #2 x 4", #3 x 6"
- Square #1 x 4", #2 x 1-1/2", #2 x 4", #3 x 4"



720566 JKS-14S List \$206.85

SALE

\$119.95

5 PC Pliers/Cutter Maintenance Set



- CrV steel

730321 JPS-5 List \$101.25

SALE

\$58.70

5 PC Mechanic's Pliers Set



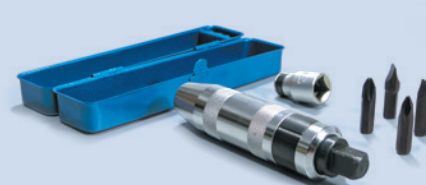
- Cutting blades and teeth induction hardened to HRC 58-62
- Double dipped cushion grip handles provide sure grip and all day comfort

730341 JPS-5M List \$106.85

SALE

\$61.95

5 PC 1/2" DR Impact Driver Set



- S2 steel bits for professional use
- Drives 5/16" shank screwdriver bits and 1/2" drive impact sockets
- Ideal for removing rusted fasteners

720702 JID-5S List \$56.85

SALE

\$32.95

9" Wire Stripper/Cutter/Crimper



- 10-22 AWG

730725 JMWS-9618 List \$40.80

SALE

\$23.65

22 PC SAE/Metric Long Arm Hex Key Set



- 0.05 - 3/8" and 1.5 - 10 mm

775162 JHK-22SM List \$46.50

SALE

\$26.95

SAE or Metric Hex Key Wrenches - Long Arm Ball Nose Sets



- 775173: 1/16 - 3/8"
- 775184: 1.5 - 10 mm
- CrV Steel

PROD. NO.	MOD. NO.	Standard	List	Sale
775173	JBHK-10	SAE	\$29.25	\$16.95
775184	JBHK-9M	Metric	\$27.50	\$15.95

Bolt Cutters - Heavy Duty



- Chrome Moly blades

PROD. NO.	MOD. NO.	Length	Capacity (Soft)	Capacity (Medium)	List	Sale
731112	BC-12	12"	3/16"	5/32"	\$60.75	\$46.95
731114	BC-14	14"	1/4"	3/16"	\$64.60	\$49.95
731118	BC-18	18"	5/16"	1/4"	\$82.70	\$63.95
731124	BC-24	24"	3/8"	5/16"	\$98.25	\$75.95
731136	BC-36	36"	5/8"	3/8"	\$193.95	\$149.95
731142	BC-42	42"	3/4"	7/16"	\$297.45	\$229.95

Jumbo Extra Long Ball Nose Sets



- S2 Steel

PROD. NO.	MOD. NO.	Sizes	List	Sale
775176	JBHK-17XL	0.05-3/4"	\$241.35	\$139.95
775186	JBHK-17LM	1.3-19 mm	\$241.35	\$139.95

Lever Grease Gun – Heavy Duty



- A premium, heavy duty grease gun built tough for the professional, industrial markets
- Includes rigid hose
- 3 way loading capability

350152 JLGG-14HD List \$50.90

SALE \$34.95

Pistol Grip Grease Gun – Heavy Duty



- Pistol grip design offers convenient one-handed operation
- Die cast head protects hardened steel plunger
- Includes 4" rigid hose & 18" flex hose

350155 JPGG-14HD List \$72.70

SALE \$49.95

24 US Gallon (90 Litre) Waste Oil Drain – Heavy Duty



- Large 90 litre steel recovery tank
- 78" long drainage hose
- Tank mounted oil-level sight gauge

350511 JOIDR90 List \$692.85

SALE \$499.95

13-1/2" 3/4 HP 12 Speed Bench Drill Press



- Powerful 3/4 horsepower motor
- 12 speed capability allows for a broad assortment of drilling applications
- Safety on/off switch with removable lock-out key

200225 JDP-13 List \$774.40

SALE \$569.95

5,500 lb Capacity Heavy Duty Pallet Truck



- High quality 5,500 lb capacity
- 27" x 48" forks
- Entry rollers allow easy entry and exit from pallets

190918 PT-5500 List \$815.15

SALE \$599.95

40 Gallon Parts Washer – Heavy Duty



- Fusible link melts and closes lid in the event of a fire, minimizing danger to workers and property
- Extra-large 83 litre working capacity

355008 JPW-40 List \$557.00

SALE \$409.95

22" 1-1/2 HP 12 Speed Drill Press



- Powerful 1-1/2 horsepower motor
- Full 22" swing for easy drilling of larger work pieces
- 12 speed capability allows for a broad assortment of drilling applications

200357 JDP-22F List \$2,629.10

SALE \$1,935.00

6 Wheel Mechanic's Creeper



- Made with 100% new high density polyurethane for unparalleled strength and long life – no recycled materials
- Generous shoulder relief allows unrestricted arm movement
- 6 large double post polyurethane casters with ball bearings provide a smooth ride over most shop floors

355130 JBMCM-620 List \$103.40

SALE \$79.95

Mechanic's Adjustable Height Roller Seat



- Air piston allows for height adjustment
- Padded seat rolls on ball bearing casters

355158 JMS-642 List \$120.25

SALE \$92.95

JLRD Series L-Clamps – Standard Duty



- Standard swivel pads

PROD. NO.	MOD. NO.	Opening	Throat Depth	List	Sale
390204	JLRD-8	8"	4-3/4"	\$80.15	\$61.95
390206	JLRD-10	10"	4-3/4"	\$87.60	\$67.70
390208	JLRD-12	12"	5-1/2"	\$94.35	\$72.95
390210	JLRD-16	16"	4-3/4"	\$103.40	\$79.95
390212	JLRD-20	20"	4-3/4"	\$125.40	\$96.95

Swivel Vises – JSV Series – Heavy Duty



- Class 30 iron, 30,000 lb tensile strength castings
- Precision machined hardened steel jaws (replaceable)
- 360° swivel base with dual lock down handles

PROD. NO.	MOD. NO.	Jaw Width	Maximum Opening	List	Sale
320151	JSV-4HD	4"	4"	\$155.15	\$119.95
320152	JSV-5HD	5"	5"	\$206.90	\$159.95
320153	JSV-6HD	6"	6"	\$258.65	\$199.95
320154	JSV-8HD	8"	8"	\$388.00	\$299.95

1,500 Watt Professional Heat Gun



- 1,500W Variable Heat
- Double insulated for user safety
- Complete with 5 common accessories
- cUL approved

380001 JHGK-600 List \$96.95

SALE \$74.95

Sledge Hammers – Fibreglass Handle - Heavy Duty

- Fibreglass handle

PROD. NO.	MOD. NO.	Head Weight	Length (Overall)	List	Sale
740532	SH-4F	4 lb	16"	\$40.40	\$23.45
740533	SH-6F	6 lb	30"	\$81.35	\$47.15
740534	SH-8F	8 lb	30"	\$88.60	\$51.35
740535	SH-10F	10 lb	36"	\$95.85	\$55.60
740536	SH-12F	12 lb	36"	\$107.70	\$62.45
740538	SH-16F	16 lb	36"	\$126.55	\$73.40



16 oz Claw Hammer – Fibreglass Handle



- 16 oz

740347 CF16F List \$29.25

SALE \$16.95

Pipe Wrenches Steel – Super Heavy Duty



- Chrome Molybdenum hook and heel jaws for longest life and maximum grip

PROD. NO.	MOD. NO.	Length	Jaw Capacity	List	Sale
710122	PW-8	8"	1-3/16"	\$30.45	\$23.55
710123	PW-10	10"	1-13/16"	\$40.65	\$31.45
710124	PW-12	12"	2-7/16"	\$47.45	\$36.70
710125	PW-14	14"	2-7/16"	\$54.20	\$41.90
710127	PW-18	18"	2-7/8"	\$77.30	\$59.75
710130	PW-24	24"	3-3/16"	\$122.10	\$94.40
710136	PW-36	36"	5-1/4"	\$257.85	\$199.35

Sledge Hammers – Indestructible Handle



- Spring steel rods encased in vulcanized rubber provide the ultimate striking tool handle
- Will not break, bend, or split, even after repeated overstrikes

PROD. NO.	MOD. NO.	Head Weight	Length (Overall)	List	Sale
740580	USH-250	2.5 lb	12"	\$91.30	\$52.95
740581	USH-412	4 lb	12"	\$98.20	\$56.95
740582	USH-416	4 lb	16"	\$117.20	\$67.95
740583	USH-624	6 lb	24"	\$184.45	\$106.95
740584	USH-630	6 lb	30"	\$189.60	\$109.95
740585	USH-824	8 lb	24"	\$194.80	\$112.95
740586	USH-830	8 lb	30"	\$198.25	\$114.95
740587	USH-1030	10 lb	30"	\$229.30	\$132.95
740588	USH-1230	12 lb	30"	\$258.60	\$149.95
740589	USH-1430	14 lb	30"	\$267.25	\$154.95
740593	USH-616	6 lb	16"	\$155.15	\$89.95
740596	USH-836	8 lb	36"	\$265.50	\$153.95
740598	USH-1236	12 lb	36"	\$327.60	\$189.95

Ball Pein Hammers – Indestructible Handle



- Spring steel rods encased in vulcanized rubber provide the ultimate striking tool handle
- Will not break, bend, or split, even after repeated overstrikes

PROD. NO.	MOD. NO.	Head Weight	Length (Overall)	List	Sale
740174	UBP-2414	24 oz	14"	\$82.70	\$47.95
740175	UBP-3214	32 oz	14"	\$91.30	\$52.95
740176	UBP-4814	48 oz	14"	\$117.20	\$67.95

24 PC Punch and Chisel Set



- Dual hardened
- With roll-up pouch

775513 PC24S List \$275.85

SALE \$159.95

Tape Measures – Heavy Duty



- Ergonomic rubber grip

PROD. NO.	MOD. NO.	Width	List	Sale
775921	JTM-416SM	1" (5 m)	\$12.90	\$7.50
775929	JTM-425SM	1" (7.5 m)	\$18.10	\$10.50

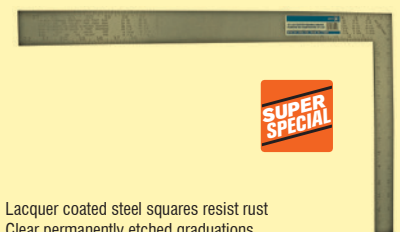
Aluminum Box Levels



- 3 vials read level, plumb, and 45°

PROD. NO.	MOD. NO.	Vials	Length	List	Sale
776001	JBL-9924B	3	24"	\$39.85	\$23.10
776002	JBL-9948B	3	48"	\$61.05	\$35.40
776004	JBL-9972B	3	72"	\$99.05	\$57.45

16" x 24" Rafter Square



- Lacquer coated steel squares resist rust
- Clear permanently etched graduations
- 1/8" increments

776060 JSRS-1624 List \$32.40

SALE \$12.95

Digital Multimeter



- Versatile meter for a wide range of electrical tests
- 310006** JDMM-200 List \$131.00

SALE \$75.95

450°C Non Contact Thermometer



- 20°C to 450°C
 - Laser aiming point
- 310016** JIRT-450 List \$344.85

SALE \$199.95

Truck Wheel Bearing Locknut Sockets - 6 Point Hexagon Style



- Specially designed sockets used for the quick removal of truck wheel bearing locknuts
- 3/4" drive

PROD. NO.	Size	List	Sale
H2150	2-3/32"	\$55.35	\$32.10
H2169	2-1/4"	\$54.40	\$31.55
H2151	2-3/8"	\$60.00	\$34.80
H2170	2-1/2"	\$54.40	\$31.55
H2171	2-5/8"	\$52.25	\$30.30
H2172	2-3/4"	\$54.55	\$31.65
H2179	2-7/8"	\$54.40	\$31.55
H2153	2-9/16"	\$52.30	\$30.35
H2155	3"	\$55.40	\$32.10
H2157	3-1/4"	\$54.40	\$31.55
H2159	3-1/2"	\$52.30	\$30.35
H2186	3-3/4"	\$60.00	\$34.80
H2161	3-7/8"	\$57.80	\$33.50
H2163	4"	\$57.80	\$33.50
H2164	4-1/8"	\$55.50	\$32.20

6" Fractional Digital Calipers



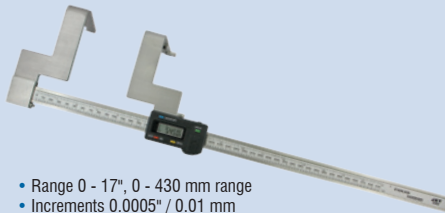
NEW METAL BODY CONSTRUCTION! NEW LOWER PRICE!

- SAE, Metric, and Fractional display
 - Resolution 0.0005" / 1/64" / 0.01 mm
 - Stainless steel
- 310133** JEDC-6F List \$129.25

SUPER SPECIAL

SALE \$74.95

17" Digital Drum Gauge - Wheels Stays On



- Range 0 - 17", 0 - 430 mm range
 - Increments 0.0005" / 0.01 mm
 - For measuring wear on brake drums without taking the wheels off
 - Stainless steel
- 310605** JEDG-1WO List \$1,034.70

SALE \$599.95

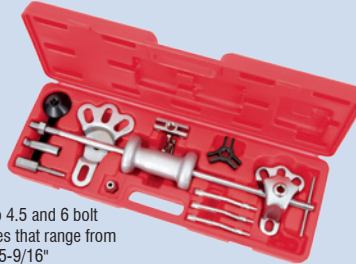
5" Digital Rotor Gauge



- Range 0 - 5" (0 - 125 mm)
 - Increments 0.0005" / 0.01 mm
 - Stainless steel
- 310602** JERG-1 List \$327.60

SALE \$189.95

Slide Hammer Multi-Purpose Puller Kit - Heavy Duty



- Applies to 4.5 and 6 bolt stud circles that range from 4-1/4" to 5-9/16"
- H3560** List \$396.60

SALE \$229.95

Digital Automotive Multimeter



- Full-range - performs complete tune-up and troubleshooting tests on all vehicles.
 - Includes tests such as tach and dwell, test fuel injectors, sensors, alternators, spark plug wires, ignition and charging systems, battery condition and cranking voltage.
 - Easy-to-read digital LCD
 - Data hold function
 - Computer safe
- H3630** List \$275.85

SALE \$159.95

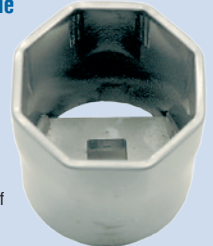
100 A Analogue Load Tester



- Tests 6 and 12 volt batteries up to 1,000 CCA
 - Load capacity: 100 A
- H3432** List \$94.45

SALE \$54.75

Truck Wheel Bearing Locknut Sockets - 8 Point Octagon Style



- Specially designed sockets used for the quick removal of truck wheel bearing locknuts
- 3/4" drive

PROD. NO.	Size	List	Sale
H2158	3-1/4"	\$50.90	\$29.50
H2188	3-3/4"	\$57.80	\$33.50
H2176	3-13/16"	\$60.20	\$34.90
H2162	3-7/8"	\$60.05	\$34.80
H2166	4-3/8"	\$81.00	\$46.95
H2168	4-7/8"	\$90.20	\$52.30

8" Square Tool Bag



- Premium quality 1680D polyester
- Interior size 8 x 8 x 6-1/2"
- Tools not included

842011 JSTB-8 List \$73.20

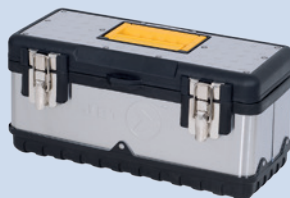


SALE

\$49.95

Stainless Steel / Plastic Hand Tool Boxes - Heavy Duty

- Combination of stainless steel and plastic components, offers great strength with low weight
- Will not rust
- Removable tool tray



PROD. NO.	MOD. NO.	Width	Depth	List	Sale
842152	JPSTB-15	15"	6-1/4"	\$43.00	\$33.25
842153	JPSTB-20	20"	9-5/8"	\$64.60	\$49.95
842154	JPSTB-22	22-1/2"	11"	\$87.45	\$67.60

Jobsite Tool Storage Boxes - Super Heavy Duty



- Super Heavy Duty 16 gauge steel body and lid for maximum security
- Made in Canada!



PROD. NO.	MOD. NO.	Storage capacity	Width	List	Sale
842480	JSB3219	4.5 ft³	32-1/8"	\$489.05	\$359.95
842481	JBTS4824	16.0 ft³	48-1/8"	\$624.95	\$459.95

Tool Back Pack

- Premium quality 1680D polyester
- 43 pockets
- Tools not included

842016 JTBP-100 List \$122.05



SALE

\$94.35

27" x 18" 6 Drawer SUMO® Series Mechanic's Chest

- Double-wall steel construction with reinforced bottom channel on cabinets
- Ball bearing slides on all drawers

842553 SMC2706 List \$500.00



SALE

\$368.00

42" x 16" 10 Drawer SUMO® Series Mechanic's Chest

- Double-wall steel construction with reinforced bottom channel on cabinets
- Ball bearing slides on all drawers

842563 SMC4210 List \$964.60



SALE

\$709.95

16" Zip Top Tool Bag



- Premium quality 1680D polyester
- Interior size 16 x 8 x 11"
- Tools not included

842006 JZTB-16 List \$73.20



SALE

\$49.95

27" x 18" 7 Drawer SUMO® Series Roller Cabinet

- Double-wall steel construction with reinforced bottom channel on cabinets
- Ball bearing slides on all drawers

842503 SRC2707 List \$679.30



SALE

\$499.95

42" x 18" 11 Drawer SUMO® Series Roller Cabinet

- Double-wall steel construction with reinforced bottom channel on cabinets
- Ball bearing slides on all drawers

842513 SRC4211 List \$1,379.10



SALE

\$1,015.00

41" x 18" 10 Drawer B&G Series Roller Cabinet

- Ball Bearing slides
- Extra heavy gauge steel for medium to heavy duty applications

842613 RC4110-BG List \$1,614.05



SALE

\$1,187.95

53" x 19" 8 Drawer Treasure Series Tool Chest



- Unique styling stands out in any garage or shop!
- Drop down trays on chest and flip up trays on cabinet provide plenty of work space
- Full width aluminum drawer pulls feature Safe Lock latches to prevent drawers opening when moving tool box
- Ball bearing drawer slides with Auto Close feature ensure drawers are completely closed before locking

842772 TSMC5308 List \$2,301.10



SALE

\$1,595.00

53" x 19" 12 Drawer Treasure Series Roller Cabinet

- Unique styling stands out in any garage or shop!
- Drop down trays on chest and flip up trays on cabinet provide plenty of work space
- Full width aluminum drawer pulls feature Safe Lock latches to prevent drawers opening when moving tool box
- Ball bearing drawer slides with Auto Close feature ensure drawers are completely closed before locking

842722 TSRC5312 List \$3,180.65



SALE

\$2,195.00

LED Flashlight - 230 Lumens



- SMD Technology
- Up to 100,000 hours lifetime

849817 JLFL-230 List \$65.90

SALE

\$50.95

LED Headlamp



- SMD Technology
- Up to 100,000 hours lifetime
- Tilts 9 positions

849821 JLHL-220 List \$47.80

SALE

\$36.95

LED Flashlight - 600 Lumens - with USB charger



- SMD Technology
- Up to 100,000 hours lifetime

849819 JLFL-600U List \$77.55

SALE

\$59.95

12 Gauge ABS Retractable Extension Cord Reel (40 ft)



- 3 grounded outlets
- 12/3 40' SJTW cord

849877 JPCR-1240 List \$232.75

SALE

\$179.95

LED Work Light with 25' Cord



NEW!

- 20 LED's
- 25' SJT cord

849836 JLWL-20XL List \$63.35

SALE

\$49.00

LED Worklight - 420 Lumens



- SMD Technology
- Up to 100,000 hours lifetime

849835 JLWL-66 List \$94.35

SALE

\$72.95

Contractor Grade Extension Cords - Single-Tap



- SJTOW cord rated to -50°C
- Light indicates live power

PROD. NO.	MOD. NO.	Cord Length	Gauge	List	Sale
849841	JLEC-1625S	25'	16	\$20.25	\$15.65
849842	JLEC-1650S	50'	16	\$36.70	\$28.35
849843	JLEC-16100S	100'	16	\$68.40	\$52.90
849861	JLEC-1425S	25'	14	\$28.40	\$21.95
849862	JLEC-1450S	50'	14	\$49.10	\$37.95
849864	JLEC-14100S	100'	14	\$94.35	\$72.95
849866	JLEC-1225S	25'	12	\$38.75	\$29.95
849867	JLEC-1250S	50'	12	\$74.95	\$57.95
849869	JLEC-12100S	100'	12	\$142.20	\$109.95

Heavy Duty Outlet Adapter



NEW!

- Converts 1 grounded 3 prong outlet into 3 grounded outlets

849895 JTA-3T List \$5.00

SALE

\$3.85

100 Ft Temporary Light String



- 10 lights per string
- Max 150W bulbs

849879 JTLS-14100 List \$219.85

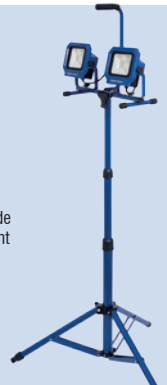
SALE

\$169.95

40 Watt SMD Twin Head Work Site Light with Heavy Duty Tripod

- Highly efficient Surface Mounted Diode technology provides brilliant white light with minimal power consumption
- Stays cool to the touch even after all day use
- Twin lights feature dual switches for independent use

849914 SWL-40TS List \$245.70



SALE

\$189.95

50 Watt SMD Work Site Light

- Highly efficient Surface Mounted Diode technology provides brilliant white light with minimal power consumption
- Stays cool to the touch even after all day use

849915 SWL-50 List \$175.85



SALE

\$135.95



PROFESSIONAL PRODUCTS - VALUE BY DESIGN

40 PC 1/4" Drive SAE/Metric Socket Set



- Chrome Vanadium steel
- 5-1/2" quick release ratchet
- Regular and Deep: 3/16 - 1/2"
- Regular and Deep: 4 - 12 mm

020113 ISK-1440SM List \$96.95

SALE

\$69.95

49 PC 3/8" Drive SAE/Metric Socket Set



- 8" quick release ratchet
- Regular: 3/8 - 7/8", 6 - 19 mm
- Deep: 3/8 - 7/8", 8 - 19 mm

020125 ISK-3849SM List \$166.25

SALE

\$119.95

20 PC 1/2" Drive SAE Socket Set



- 10" quick release ratchet
- Regular: 3/8 - 1-1/4"

020133 ISK-1220S List \$156.55

SALE

\$112.95

13 PC 1/2" Drive Impact Socket Sets



- Heat treated Chrome Molybdenum sockets for professional applications
- Torque-Drive® sockets apply torque to flats of fasteners to prevent corner rounding and increase torque
- Black phosphate finish resists corrosion and will not peel

PROD. NO.	MOD. NO.	Type	List	Sale
020723	IPS-1312	Regular SAE	\$76.15	\$54.95
020728	IPS-1312D	Deep SAE	\$120.50	\$86.95

16 PC Combination Wrench Sets



- Drop forged Chrome Vanadium steel
- Raised panel style
- 020215: 1/4 - 1-1/4"
- 020216: 6 - 32 mm

PROD. NO.	MOD. NO.	Type	List	Sale
020215	ICW-16	SAE	\$80.30	\$57.95
020216	ICW-16M	Metric	\$80.30	\$57.95

14 PC SAE Angle Wrench Set - 60° & 15°



- Fully polished mirror finish
- 3/8 - 1-1/4"
- 60° & 15°

020222 IACW-14 List \$145.45

SALE

\$104.95

10 PC Jumbo Combination Wrench Sets



- Industrial quality drop forged Chrome Vanadium steel
- 020202: 1-5/16 - 2"
- 020203: 33 - 50 mm

PROD. NO.	MOD. NO.	Type	List	Sale
020202	ICWJ-10S	SAE	\$263.25	\$189.95
020203	ICWJ-10M	Metric	\$263.25	\$189.95

5 PC Cushion Grip Pliers Set



- Cushion grip handles

020604 IPL-5S List \$45.65

SALE

\$32.95

14 PC Ergonomic Screwdriver Set



- Chrome Vanadium steel shafts
- Comfortable ABS handles
- 3 x Phillips
- 3 x Square
- 5 x Slot
- 3 x TORX®

020907 IESD-14S List \$53.35

SALE

\$38.50

1/2" Drive Torque Wrench



- Click type
- 10 - 150 ft/lb

021811 ITW-2063 List \$95.55

SALE

\$68.95

1" x 15' 1,500 lb Ratchet Tie Down Set



- Heavy duty weather resistant polyester web
- Rated capacity 1,500 lb

027116 ITD-1154R List \$46.85

SALE

\$33.80

2" x 30' 10,000 lb Ratchet Tie Down



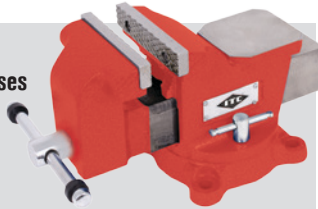
- Heavy-duty weather resistant polyester web
- Rated capacity 10,000 lb

027108 RTD-230 List \$80.30

SALE

\$57.95

Swivel Base Mechanic's Vises



- Lightweight vise cast from 30,000 PSI tensile strength iron
- 360° swivel base with dual lock down handles

PROD. NO.	MOD. NO.	Jaw Width	List	Sale
024724	ISVL-4	4"	\$120.10	\$86.65
024726	ISVL-6	6"	\$217.50	\$156.95
024728	ISVL-8	8"	\$299.30	\$215.95

SALE \$199.95

3 Ton Hydraulic Service Jack



- Conforms to ANSI standards
- Lifting range: 5-1/2 to 19-1/2"

024827 ISJ-3 List \$277.10

SALE \$199.95

Non-Contact Infrared Thermometer



- Allows accurate measurement of temperature without contact
- Measuring range: -20°C to 520°C (-4°F to 968°F)

027591 IRT-520 List \$142.70

SALE \$102.95

40" Drop Shoulder Metal Frame 6 Wheel Creeper

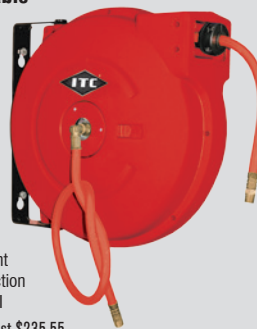


- 40 x 17 x 4"
- Drop shoulder design for added comfort

024861 IGC-100 List \$114.95

SALE \$82.95

3/8" x 50' Retractable Air Hose Reel - Polypropylene



- Durable impact resistant polypropylene construction
- Max. pressure: 300 PSI

028281 IAW3850 List \$235.55

SALE \$169.95

3/8" x 50' Retractable Air Hose Reel - Metal



- High grade hardened steel spring
- Max. pressure: 300 PSI

028272 I3850AS List \$263.25

SALE \$169.95

Bench Grinders



- Spindles are all ball bearing
- Comes complete with adjustable eye shields and tool rests
- Capacitor start motor
- cUL Approved

PROD. NO.	MOD. NO.	Motor	List	Sale
028013	IBG-6	1/2 HP	\$138.50	\$99.95
028014	IBG-8	3/4 HP	\$193.95	\$139.95

Portable Air Tanks



- 125 PSI maximum pressure
- Complete with pressure gauge, hose and tire chuck
- Includes safety bypass valve with manual override

PROD. NO.	MOD. NO.	Capacity	List	Sale
013480	ITPAT5	5 Gallon	\$87.25	\$62.95
013485	ITPAT11	11 Gallon	\$123.25	\$88.95

10 PC Heat Gun Kit



- 120V, 12.5A
- Features dual heat settings and fan speeds
- Air Temperature:
 - Low: 375°C (700°F)
 - High: 495°C (925°F)
- Includes many accessories

011981 SPT270 List \$46.50

SALE \$31.95

4-1/2" Angle Grinder



- 5A 120V motor
- 12,000 RPM no-load speed

011705 IPT-450 List \$72.70

SALE \$49.95

5" Angle Grinder



- 9A 120V motor
- 10,500 RPM no-load speed

011707 IPT-500 List \$101.85

SALE \$69.95

7" Variable Speed Polisher



- 10A 120V motor
- 1,000 - 3,000 RPM no-load speed with thumbwheel selector

011713 IPT-700V List \$181.90

SALE \$124.95

Die Grinders

.6 HP 1/4" Mini Die Grinder – Heavy Duty



- Powerful .6 horsepower motor – our most popular die grinder
- Front exhaust, compact motor housing – only 5-3/4" long!
- Motor shaft features ball bearings front and back, and motor end plates are made from durable die cast aluminum metal for maximum life and performance

402114 MG1HD List \$152.40

SALE

\$109.95

.9 HP 1/4" Die Grinder – Heavy Duty



- Front exhaust, compact motor housing – only 6-1/2" long!

402123 MG19HD List \$263.25

SALE

\$189.95

.6 HP 1/4" 90° Angle Head Die Grinder – Heavy Duty



- Rear exhaust, compact motor housing
- New improved drive gear system for longer life in heavy applications

402113 MG90HD List \$339.45

SALE

\$244.95

.9 HP 1/4" Die Grinder – Super Heavy Duty



- Housing precision machined from solid bar stock for superior strength
- Motor has two ball bearing construction, finely honed alloy steel cylinder and two steel end plates ensure maximum performance and life
- Push button, self locking lever throttle for comfort, control and safety
- 18,000 RPM

402116 DG149HD List \$401.85



SALE

\$289.95

.6 HP 1/4" 6" Extended Die Grinder – Heavy Duty



- Powerful .6 horsepower motor
- Front exhaust, compact motor housing
- Motor shaft features ball bearings front and back, and motor end plates are made from durable die cast aluminum metal for maximum life and performance

402115 MG6HDE List \$256.30

SALE

\$184.95

5" Angle Grinder – Heavy Duty



- Spindle lock for easy accessory changes
- Adjustable swivel guard has 9 positive lock settings, no tools required
- 11,000 RPM

402313 AG50HD List \$553.10

SALE

\$379.95

5" Angle Grinder – Super Heavy Duty



- Powerful .9 horsepower angle grinder for heavy duty applications
- Lightweight and compact design with new moulded handle grip
- 11,000 RPM

402312 AG50SD List \$698.70



SALE

\$479.95

3" 90° Angle Head Cut-Off Tool – Heavy Duty



- Powerful .6 horsepower motor
- Rear exhaust, compact motor housing
- Unique design to gain access in hard to reach places

409012 CO390HD List \$346.40

SALE

\$249.95

3/8" Reversible Drill – Keyed Chuck – Heavy Duty



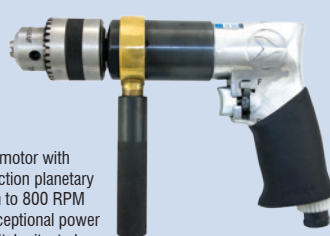
- Excellent for a wide range of drilling jobs
- Pressure grease fitting on housing permits easy maintenance for longer tool life

404412 ADR380HD List \$232.85

SALE

\$159.95

1/2" Reversible Drill – Keyed Chuck – Heavy Duty



- Heavy duty motor with double reduction planetary gear system to 800 RPM provides exceptional power
- Reverse switch situated for fast and easy one handed operation

404422 ADR12HD List \$342.05

SALE

\$234.95

Straight Type Flux Chipper – Heavy Duty



- A powerful heavy duty industrial flux chipper
- Light-weight compact design allows maximum operator control and access to jobs in hard-to-reach areas

404203 FC250 List \$360.25

SALE

\$259.95

20 Ton Truck Ramps - Super Heavy Duty



- Long retractable handle eases movement and stores easily out of the way
- Suitable for large truck tires up to 16" maximum width
- Comes with rubber non-skid pad to prevent slippage
- 20 ton capacity per pair

030481 TR-20ATW List \$1,361.10

SALE \$935.00

1.2 Ton Large Wheel Removal Dolly

- For removing, transporting, and mounting large off-road tractor / wheeled excavator tires easily and safely
- For large wheels from 39" (1 m) up to 86" (2.2 m) in diameter and up to 31" (0.8 m) in cross-section width



030487 WDX12 List \$2,210.45

SALE \$1,595.00

Bottle Jacks - Heavy Duty

- Factory pre-tested to 150% of rated capacity
- Heavy duty steel saddle for secure lifts
- Heat treated piston for maximum strength



PROD. NO.	MOD. NO.	Capacity	List	Sale
030106	312A	12 ton	\$126.15	\$89.95
030110	320A	20 ton	\$173.80	\$119.95

10 Ton Jack Stands High Profile Set - Heavy Duty

- Large support saddle and extra wide four legged base for stability
- 10 height-adjusting pin positions



032226 871A List \$734.45

SALE \$529.95

2 Ton Engine Crane - Heavy Duty

- Swivel hook on boom for better maneuverability
- Telescopic boom provides 4 adjustments



030315 216 List \$914.60

SALE \$659.95

1 Ton Low Profile Truck Transmission Jack - Heavy Duty

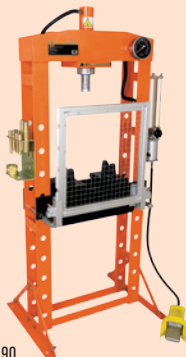
- Adjustable universal saddle and corner brackets
- Head dimensions:
Width - Min. 6-1/2", Max. 18-1/4",
Length - Min. 6-3/4", Max. 18-1/2"
- Range: 10" - 44"



030547 806A List \$2,764.80

SALE \$1,995.00

20 Ton Shop Press - Super Heavy Duty



- Welded frame for added strength
- Protective guard, combination V block/pressing adaptors included
- Side to side press head
- Liquid filled gauge

032181 SP20T-SHD List \$2,321.90

SALE \$1,499.00

4 Ton Body Repair Kit

Kit Includes:

- Hydraulic hand pump
- 4 ton heavy duty ram with 4" stroke
- 5' hydraulic hose with spring guards on both ends
- 5 quick connect extensions: 3-1/4", 5", 8-1/2", 16-1/2", 19-1/2"
- 1/2 ton spreader ram
- Rubber head, wedge head, spreading toe and plunger toe, flat base, v-base, quick connector



030202 BRK-4T List \$465.75

SALE \$319.95

3/8" x 50' Retractable Air Hose Reel

- Heavy-gauge, all steel construction
- Five position adjustable outlet roller arm
- Spring-powered automatic recoil
- Angled hose guide for smooth, parallel hose pull-out and retraction
- Eight position ratchet gearing locks the reel at the desired hose length



391723 A3850 List \$283.80

SALE \$189.95

1/2" x 50' Retractable Air Hose Reel

- Heavy-gauge, all steel construction
- Five position adjustable outlet roller arm
- Spring-powered automatic recoil
- Angled hose guide for smooth, parallel hose pull-out and retraction
- Eight position ratchet gearing locks the reel at the desired hose length



391728 A1250 List \$320.20

SALE \$219.95

Hybrid Air Hoses - SHD



- Polymer construction for the heaviest duty applications
- UV, ozone, and chemical resistance for longevity
- 300 PSI max working pressure, 1,200 PSI burst pressure
- Temperature range: -40°C (-40°F) to +82°C (180°F)

PROD. NO.	MOD. NO.	ID Size	Hose Length	List	Sale
408193	AH3825HY	3/8"	25'	\$51.20	\$36.95
408194	AH3850HY	3/8"	50'	\$78.95	\$56.95
408195	AH1225HY	1/2"	25'	\$66.45	\$47.95
408196	AH1250HY	1/2"	50'	\$114.95	\$82.95

3 Ton 2xP Floor Jack


- 2xP double pump design for fast efficient lifting
- Superior grade "soft" components for better performance in increased jack life
- Padded handle bumper protects vehicle finish

030417 953D List \$349.30

SALE
\$219.95
3-1/2 Ton Double Pumper Service Jack - Heavy Duty


- Equipped with a double pump design to increase speed without compromising overall performance of the jack
- Low Height: 4", High Height: 19-1/2"

030407 966HO List \$567.65

SALE
\$389.95
4 Ton 2xP Floor Jack


- 2xP double pump design for fast efficient lifting
- Superior grade "soft" components for better performance in increased jack life
- Padded handle bumper protects vehicle finish

030408 964D List \$582.20

SALE
\$399.95
2 Ton 2xP Low Profile Floor Jack


- Low profile: 75 mm (2.95")
- 2xP double pump design for fast efficient lifting
- Superior grade "soft" components for better performance in increased jack life

030404 962DL List \$436.65

SALE
\$299.95
3 Ton 2xP Low Profile Floor Jack


- Low profile: 95 mm (3.75")
- 2xP double pump design for fast efficient lifting
- Superior grade "soft" components for better performance in increased jack life

030405 963DL List \$553.10

SALE
\$379.95
2 Ton Aluminum Racing Jack


- Lightweight, only 43 lb (19.5 kg), and a 2-ton capacity makes this a very versatile jack for numerous applications from towing and service vehicle applications, general garage service to racers of all types

030412 962AL List \$538.55

SALE
\$369.95
Jack Safety Stands - Ratcheting Style - Heavy Duty

- Heavy duty stands feature notched saddles to accept unitized body configuration
- Sold and shipped in pairs

PROD. NO.	MOD. NO.	Capacity	Low Height	List	Sale
032241	853A	3 tons	11"	\$87.25	\$59.95
032243	856A	6 tons	15-1/2"	\$130.95	\$89.95
032246	872B	12 tons	18"	\$347.85	\$238.95



Tire Service

1/2" Drive Impact Wrench - Heavy Duty


- Produces 550 ft/lb of hard hitting torque
- Weighs only 5.7 lb
- Twin hammer mechanism provides more power and smooth, balanced impact blows for reduced vibration

400252 AW50AT List \$232.85

SALE
\$159.95
1/2" Composite Impact Wrench - Super Heavy Duty


Limited Qty.



- Specially treated anvil for long service life
- Internal one piece construction reduces power loss
- Produces 780 ft/lb of nut wrenching torque in reverse

400242 AW500C List \$298.85

SALE
\$199.95
1/2" Drive Composite Series Impact Wrench - Super Heavy Duty


- Produces 780 ft/lb of nut wrenching torque in reverse
- Will loosen a nut/bolt stuck at over 1,200 ft/lb in 15-20 seconds
- Weighs only 4.40 lb

400240 AW500CSDP List \$363.85

SALE
\$249.95

HEAVY DUTY TRUCK TIRE TOOLS | AIR TOOLS



22 Ton Air/Hydraulic Truck Jack

- Designed for lifting trucks, buses, trailers, and other heavy duty equipment
- Two-piece 42.7" handle
- Operates at 90 - 145 PSI

030470 727 List \$844.25



SALE \$579.95

20 Ton Air/Hydraulic Truck Jack - Heavy Duty

- Model 728C has set the standard in the Canadian truck tire industry for over 10 years
- Low Height: 9-1/4", High Height: 16-1/4"

030445 728C List \$1,310.10



SALE \$899.95

Single Stage 22 Ton Air Hydraulic Truck Jack - Super Heavy Duty

- Super Heavy Duty, single stage 22-ton jack built for a wide variety of demands from the heavy duty trucking, agricultural, fleet, construction and military sectors
- The piston head seal design is borrowed from industrial technology providing a superior low and high pressure seal, giving this jack a much better hold under severe load conditions

030450 722SHD List \$1,688.60



SALE \$1,159.95

2 Stage 30/15 Ton Air Hydraulic Truck Jack - Super Heavy Duty



- The extra light weight and portability makes this the ideal service jack for service vehicles
- Low Height: 150 mm (5.92")
- High Height: 30 ton - 224 mm (8.82"), Lift - 74 mm (2.91")
- High Height: 15 ton - 292 mm (11.5"), Lift - 142 mm (5.59")

030474 730SHD List \$2,270.95



SALE \$1,560.00

2 Stage 50/25 Ton Air Hydraulic Truck Jack - Super Heavy Duty



- Super Heavy Duty, 2 stage 50 ton and 25 ton built tough for the rigors of the heavy duty trucking, agricultural and fleet business
- Low Height: 215 mm (8.46")
- High Height: 50 Ton - 332 mm (13.07"), Lift - 117 mm (4.61")
- High Height: 25 Ton - 446 mm (17.56"), Lift - 231 mm (9.09")

030475 750SHD List \$3,399.15



SALE \$2,335.00

20 Ton Air/Hydraulic Bottle Jack - Super Heavy Duty



- Built tough for the rigors of the heavy duty trucking, agricultural and fleet business
- Operating pressure 110-120 PSI

030158 385SHD List \$625.90



SALE \$299.95

20 Ton Pin Style Jack Stand - Heavy Duty

- Four height-adjusting pin positions
- Large support saddle
- 10" x 10" square base
- Sold individually

032229 878A List \$297.90



SALE \$214.95

10 Ton Jack Stands Low Profile Set - Heavy Duty

- Large support saddle and extra wide four legged base for stability
- 7 height-adjusting pin positions
- Sold and shipped in pairs

032228 873A List \$651.30

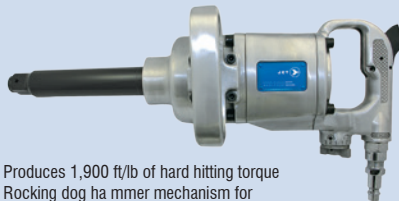


SALE \$469.95

1" Drive D-Handle Impact Wrench (6" Extended Anvil)

- Produces 1,900 ft/lb of hard hitting torque
- Rocking dog hammer mechanism for power and durability
- 6" extended anvil to access lug nuts in truck and tractor wheels

400456 AW25AD6 List \$727.80



SALE \$499.95

1" Drive "Ultra Lightweight" Impact Wrench - Heavy Duty (6" Extended Anvil)

- Produces an incredible 1,800 ft/lb of nut wrenching torque in reverse
- Ultimate power in reverse maximizes removal of stubborn rusted nuts
- Weighs only 15.9 lb - unheard of power-to-weight performance
- Ultra lightweight "Back Saver Technology" ensures maximum operator comfort and safety, and minimum fatigue during use

400427 AW25LHD6 List \$1,339.20



SALE \$899.95

1" Drive Lightweight Impact Wrench - Super Heavy Duty (6" Extended Anvil)



- Produces an incredible 2,100 ft/lb of nut wrenching torque in reverse
- Ultimate power in reverse maximizes removal of stubborn rusted nuts
- Weighs only 24 lb - unheard of power-to-weight performance - compare traditional models at over 30 lb
- Lightweight "Back Saver Technology" ensures maximum operator comfort and safety, and minimum fatigue during use

400444 AW25ASD6 List \$1,164.50



SALE \$699.95





POWER-XTREME®
- Cutting Wheels
- Super High Performance
- Thin (For Steel/Stainless)



Type 27

- Manufactured with the most advanced technology of grains, bonds and reinforcements
- Designed and formulated to ensure absolute peak resistant free cutting performance and great wheel life



PROD. NO.	Size	Thickness	Thickness	List	Sale
501671	4-1/2" x 3/64" x 7/8"	1.2 mm	.045"	\$4.10	\$2.85
501676	5" x 3/64" x 7/8"	1.2 mm	.045"	\$4.35	\$3.05
501681	6" x 3/64" x 7/8"	1.2 mm	.045"	\$6.10	\$4.05

POWERXTREME® NF
- Cut-Off Wheels
- Super High Performance
(for Angle Grinders)



Type 1

- Developed for load free cutting of aluminum and soft non-ferrous materials
- Specially formulated to eliminate loading when cutting



PROD. NO.	Size	Thickness	Thickness	List	Sale
501705	4-1/2" x 3/64" x 7/8"	1.2 mm	.045"	\$4.50	\$3.15
501708	5" x 3/64" x 7/8"	1.2 mm	.045"	\$4.75	\$3.30
501711	6" x 3/64" x 7/8"	1.2 mm	.045"	\$7.10	\$4.95

POWER-XTREME®
- Cut-Off Wheels
- Super High Performance
(for Angle Grinders)



Type 1



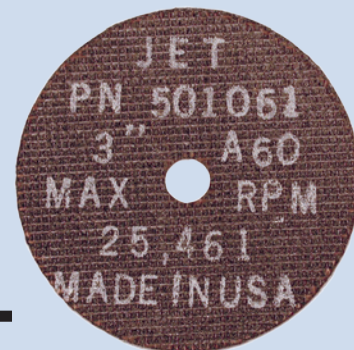
- These wheels are manufactured with the most advanced technology of grains, bonds and reinforcements offering fast, cool, burn free cutting of steel and stainless steel
- Specially designed technology ensures the longest life and best performance in its class

PROD. NO.	Size	Thickness	Thickness	List	Sale
501571	4-1/2" x 3/64" x 7/8"	1.2 mm	.045"	\$4.00	\$2.75
501576	5" x 3/64" x 7/8"	1.2 mm	.045"	\$4.30	\$2.95
501581	6" x 3/64" x 7/8"	1.2 mm	.045"	\$5.45	\$3.95

POWERPLUS®
- Cut-Off Wheels
- High Performance
(for Die Grinders)



Type 1



- Excellent for cutting all steel materials, offering outstanding cutting speed and long life

PROD. NO.	Size	Grade	Max. RPM	List	Sale
501061	3" x 1/32" x 3/8"	A60	25,460	\$2.90	\$1.95
501062	3" x 1/16" x 3/8"	A60	25,460	\$2.90	\$1.95

SUPER CHOP®
- Cut-Off Wheels
- Super High Performance
(for Portable Chop Saws)



Type 1



- Designed to offer straight, fast, smooth cutting and a bur free finish
- Best in class wheel life for the toughest applications

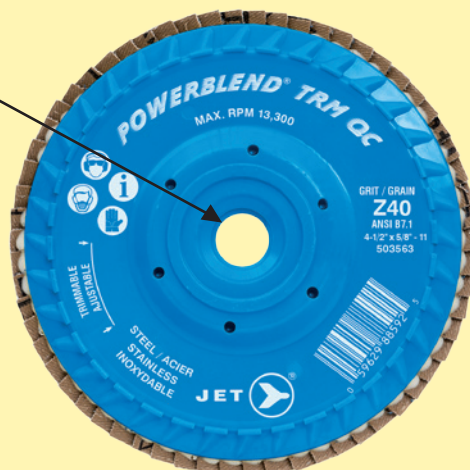
PROD. NO.	Size	Thickness	Thickness	List	Sale
501143	12" x 3/32" x 1"	2.5 mm	.094"	\$9.55	\$5.25
501146	14" x 3/32" x 1"	2.5 mm	.094"	\$11.25	\$5.65

POWERBLEND® TRM QC Flap Discs (for Angle Grinders)

- Zirconia grain flaps for fast, cool cutting and extra-long life on steel and stainless steel
- The 5/8-11 "Quick Change" arbor increases productivity by reducing time spent on wheel change outs
- Trimable backing pad for extended disc life

PROD. NO.	Grit	Max. RPM	Type	List	Sale
503563	Z40	13300	27	\$11.35	\$7.50
503565	Z60	13,300	27	\$11.35	\$7.50
503567	Z80	13,300	27	\$11.35	\$7.50
503569	Z120	13,300	27	\$11.35	\$7.50
503573	Z40	12,200	27	\$13.50	\$8.95
503575	Z60	12,200	27	\$13.50	\$8.95
503577	Z80	12,200	27	\$13.50	\$8.95
503579	Z120	12,200	27	\$13.50	\$8.95

5/8-11
"Quick Change"
arbor



Type 27

POWERBLEND® EDG

POWERBLEND® EDG - Curved Edge Flap Discs - Super High Performance (for Angle Grinders)

- New POWERBLEND EDG Super High Performance flap discs are folded upwards at a 90° angle to achieve optimal results in grinding fillet welds, corners, and other hard to reach places
- Made from specially formulated ceramic grains that are designed to stay sharp, ensuring faster stock removal rates and longer wheel life
- Fillet and corner grinding made easy

PROD. NO.	Size	Grit	Max. RPM	List	Sale
503865	4-1/2" x 7/8"	CG60	13,300	\$19.60	\$14.15
503875	5" x 7/8"	CG60	12,200	\$21.10	\$15.25



Type 27

3 x 5/8-11NC Crimped Cup Brush



- JET crimped wire cup brushes are made with quality piano wire (tempered high carbon steel) for fast brushing action and maximum life
- Designed for surface cleaning, rust and paint removal, and light deburring on large flat surfaces

554100 CC318T List \$15.75

SALE

\$11.35

3 x 5/8-11NC Knot Twisted Cup Brush - High Performance



- Used on angle grinders for heavy duty cleaning, weld and scale removal, deburring and general heavy duty brush work

554203 CK3201T List \$20.80

SALE

\$11.95

2-3/4 x 5/8-11NC Knot Banded Cup Brush



- JET knot banded wire cup brushes are similar to a regular knot style cup brush but have the added feature of a band or knock-off ring

553605 CKB2201T List \$28.25

SALE

\$20.40

Beam Clamps - VBC Series

**SUPER
SPECIAL**



- Adjustable to fit securely on a wide range of flange and beam widths
- Meets ANSI B30.11 specifications (certificate included)

PROD. NO.	MOD. NO.	Capacity	Rated Capacity	Rated Flange Width	List	Sale
120613	VBC-1	1 ton	2,200 lb	2-61/64 to 8-21/32"	\$84.20	\$56.95
120615	VBC-2	2 tons	4,400 lb	2-61/64 to 8-21/32"	\$89.45	\$59.95
120616	VBC-3	3 tons	6,600 lb	3-5/32 to 12-39/64"	\$148.70	\$99.95
120617	VBC-5	5 tons	11,000	3-5/32 to 12-39/64"	\$164.50	\$109.95

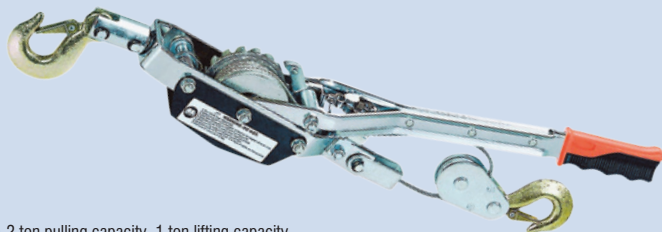
Lever Chain Pullers - VLP Series



- Top and bottom safety hooks
- Grade 80 load chain

PROD. NO.	MOD. NO.	Rated Lifting Capacity	Standard Lift	Number of Falls	List	Sale
110302	VLP-75	3/4 ton	5'	1	\$263.25	\$189.95
110303	VLP-150	1-1/2 tons	5'	1	\$365.95	\$269.34
110306	VLP-75-10	3/4 ton	10'	1	\$312.45	\$224.95
110307	VLP-150-10	1-1/2 tons	10'	1	\$421.10	\$299.95

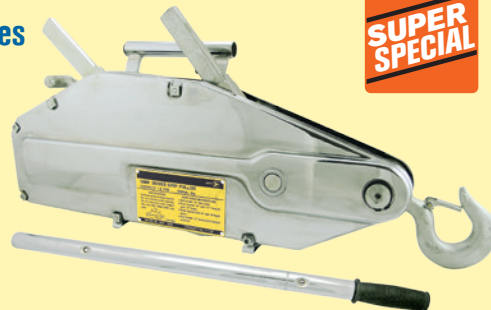
Hand Cable Pullers - JCPP Series - Heavy Duty



- 2 ton pulling capacity, 1 ton lifting capacity
- Single pawl

PROD. NO.	MOD. NO.	Rated Pulling Capacity	Rated Lifting Capacity	Number of Pawls	List	Sale
111225	JCPP-200	2 tons	1 ton	1	\$87.25	\$62.95
111228	JCPP-400D	4 tons	2 tons	2	\$159.15	\$114.95

Wire Rope Pullers - SUMO® Series - Heavy Duty



**SUPER
SPECIAL**

- Lightweight, simple and safe to operate
- May be used in any position to lift, pull, lower, or stretch heavy loads

PROD. NO.	MOD. NO.	Rated Lifting Capacity	Rated Lifting Capacity	Rated Pulling Capacity	List	Sale
111136	SGP-75A	3/4 ton	1,760 lb	1.4 tons	\$595.30	\$399.95
111137	SGP-150A	1-1/2 tons	3,520 lb	2.8 tons	\$995.75	\$669.95

3,100 PSI High Pressure Washer



- Powered by a reliable 212 cc JET engine
- 3,100 PSI, 2.3 GPM
- Mounted on a rugged powder coated steel frame
- 25 feet of high quality rubber high pressure hose
- Quick connect nozzles in 0°, 15°, 40°, and soap nozzle

291001 JPW3100L

SALE

\$615.00

4,000 PSI High Pressure Washer



- Powered by a reliable 420 cc JET engine
- 4,000 PSI, 4.0 GPM
- Mounted on a rugged powder coated steel frame
- 50 feet of 3/8" rubber hose resists kinking
- Quick connect nozzles in 0°, 15°, 40°, and soap nozzle

291005 JPW4000L

SALE

\$1,285.00

4,200 Watt Generator



- This gasoline powered generator provides up to a max of 4200 watts, 3500 watts running, of electricity
- Powered by a 223 cc JET engine with low oil alert
- Features 2 x 120V 20A Duplex plugs, 1 x 120V /240V Prong Twistlock plug
- Comes with (AVR) automatic voltage regulator

291102 JGE4200

SALE

\$799.00

sellstrom®



WELDING HELMETS

**Advantage Plus Series
– Welding Helmet
with Large ADF**

- Our newest Advantage Plus Series ADF welding helmet
- Offers excellent neck and head protection
- Made using lightweight materials, this helmet offers outstanding protection, performance, comfort and reliability
- Designed for use with cartridge respirator
- Features 4 arc sensors

S26200 WHM2000**Advantage Series
– Welding Helmet
with ADF**

- Our newest Advantage Series ADF welding helmet
- Offers excellent neck and head protection
- Made using lightweight materials, this helmet offers outstanding protection, performance, comfort and reliability
- Designed for use with cartridge respirator
- Features 2 independent arc sensors

S26100 WHB1000**Premium Series
– Welding Helmet
with Extra Large
Blue Lens Technology ADF**

- Our newest premium series ADF welding helmet
- Offers excellent neck and head protection
- Made using lightweight materials, this helmet offers outstanding protection, performance, comfort and reliability
- Designed for use with cartridge respirator
- Easy lock/unlock replacement cartridge

S26400 WHP4000**290 Series
– Welding Helmet
with Fixed Front
Shade 10 Filter**

- Sellstrom's 290 Series welding helmet has been an industry leader for decades
- Made in the U.S. - our most popular welding helmet
- Molded from Super Tuff nylon – lighter than fiberglass and extremely durable
- Extended crown provides greater overhead protection
- Specially designed rigid neck bib provides superior protection from spatter

S29501-10

COMING SOON

**4,000 PSI Pressure Washer Gun
and Wand Assembly**

- 36" spray gun and wand
- Maximum pressure: 4,000 PSI
- Comes with quick disconnect coupler

291405 PWGW4**SALE****\$74.20****50' High Pressure
Rubber Hose**

- 4,000 PSI 3/8" rubber hose, 50 ft
- Single wire braid wrapped cover
- 3/8" quick connect brass coupler, steel plug

291413 PWRH38**SALE****\$123.60**